



32<sup>nd</sup> Anniversary Edition

The  
**Renaissance**  
XXXXII

Saturday, April 13, 2024

1 p.m. • Chappell's Sales Arena • Strafford, Missouri



# The Renaissance XXXII

## 32<sup>nd</sup> Anniversary Edition

SATURDAY ~ APRIL 13, 2024 ~ 1 P.M.

Chappell's Sales Arena ~ Strafford, Missouri

Chappell's Sales Arena is located 6 miles east of Springfield

### SELLING 69 LOTS

Cow-Calf Pairs • Herd Bull Prospects • Open Heifers  
Bred Females • Select Embryo Matings • Semen

### Schedule of Events

FRIDAY, APRIL 12, 2024

Cattle Available for Viewing

SATURDAY, APRIL 13, 2024

1 p.m. - The Renaissance XXXII Sale

Lunch will be available

SALE- DAY PHONES:.....(405) 246-6324

### AUCTIONEER:

Dustin Layton.....(405) 464-2455

### SPECIAL REPRESENTATIVES:

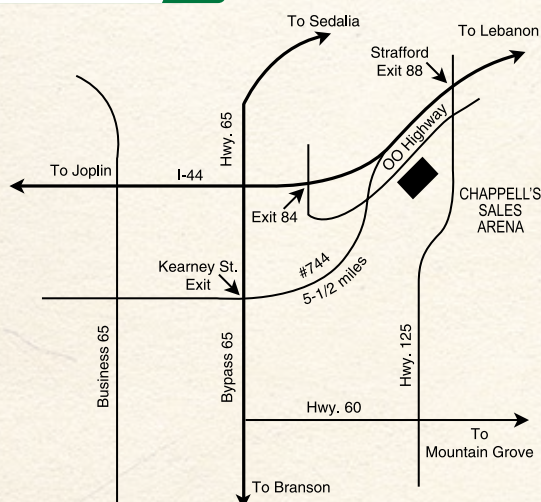
Chisolm Kinder, *The Stock Exchange*.....(405) 747-4683

David Hobbs, *Charolais Journal*.....(913) 515-1215

Harlan Powers, Special Assignment.....(217) 358-4418

Online bidding available

**LiveAuctions.TV**



### SALE HEADQUARTERS:

DoubleTree

2431 N. Glenstone, Springfield, MO.....(417) 831-3131

Fairfield Inn & Suites

2455 N. Glenstone, Springfield, MO.....(417) 833-9599

### AIR SERVICE:

Springfield is served by many major airlines.

### LOADING INFORMATION:

No cattle will be loaded until the conclusion of the sale.

### HEALTH:

All cattle will be accompanied with proper health certificates for immediate shipment.

### TERMS AND CONDITIONS:

A standard set of terms and conditions will be available sale day.

### INSURANCE:

Insurance will be handled at the settlement desk.

*Buyers unable to attend the sale may send their bids with the sale management, the auctioneer, or the special representatives. These bids will be handled in a confidential manner.*

### EPDs:

EPDS current as of 3/14/24. EPDs will likely update and change by the time registration papers are transferred.



Sale Managed by:

CLIFFORD C. MITCHELL

(405) 246-6324

email:ccmosu@msn.com

All internet purchases will return home with the consignor until payment has been received, unless prior arrangements have been made with the sale manager or consignor of designated lot. There will be local trucking available sale day.





1

## SKS SUPER PUNCHER 423K

4/2/2022  
POLLED  
EM970701

M&M OUTSIDER 4003 PLD ..... LT LONG DISTANCE 9001 PLD  
DTR MR BRIGHTSIDE 1107G2S M&M MS CARBINE 1567 PLD  
DTR MISS TURTON B500 ..... TR PZC MR TURTON 0794 ET  
BIG CREEK GAME CHANGER 192 PET .. MS COOLEY JORDAN 1107U105  
G4 MS MADELYN 622 D R REVELATION 467  
WH MISS MADDIE 221 PLD ..... EXL MIA 230M  
L&N SPORT 507  
PR MS TOP MAC 825

CE	BW	WW	YW	MK	MCE	MTL	SC	CW	REA	FAT	MB	TSI
12.4	-1.7	58	109	30	8	59	0.8	21	0.85	0.016	-0.08	250

1A: Selling 1 Unit of Sexed Heifer

1B: Selling 3 Units Conventional

1C: Selling 3 Units Conventional

The reigning National Champion Bull "Punched his Ticket" on the green shavings in Louisville. You can't help but get excited when you see Puncher—I know I did the first time I saw him. His siblings have been hanging banners all through the majors in Texas and they have been popular. I think the best is yet to come and early reports on this herd sire have been very favorable from a small sample size. This is a unique opportunity to "Punch your Ticket" in the donor pen with this son of Brightside out of the great Madelyn. One of the few opportunities to purchase Puncher semen in 2024.

offered by The Super Puncher Owners



Lot 1



2

## SKS KALLY B32

3/5/2014  
POLLED  
F1186668

D R REVELATION 467 ..... HOODOO SLASHER 1144  
SKS MR WIND POWER 702 DR WC FOREVER LUCY 372ET  
LC MS LADY WIND 4114 PET ..... SCHURRTOP 5627  
BHD REALITY T3136 P ..... LT CHAP'S LADY 2170P  
CF MS REALITY 1229 PLD CJC ILLUSION N111  
CF MS TRADEMARK 1054 PLD ..... MD MS SILVERBOE J576  
CJC TRADEMARK H45  
CF MS CIGAR 903 PLD ET

CE	BW	WW	YW	MK	MCE	MTL	SC	CW	REA	FAT	MB	TSI
10.7	-1.2	58	115	16	9.2	45	1.4	22	0.74	-0.017	-0.02	258

Selling 3 IVF Sexed Heifer Embryos by SKS Super Puncher 423K. 1 Pregnancy Guaranteed This donor excels from a profile and udder quality standpoint with somewhat of an outcross pedigree. The mating to Super Puncher could put you in the show heifer business or help raise your next champion. This is a high quality donor that is a producer and this mating should work to perfection. Another opportunity to be one of the first to have Puncher genetics.

offered by Skeans Cattle Co.



Lot 2



3

## LJR MS HOPE 2862H ET

3/30/2020  
POLLED  
EF1292454

LT LONG DISTANCE 9001 PLD ..... LT SILVER DISTANCE 5342P  
M&M OUTSIDER 4003 PLD LT BELLE 7026 P  
M&M MS CARBINE 1567 PLD ..... M&M RAPTOR 8122 PLD  
LJR SIR REDNECK MAN 903 ..... MS COOLEY JPOT 1107N9 ET  
LJR MS SATIN 22E THOMAS REDNECK 2609M  
LJR MISS WHITE SATIN 401 ..... JB ULTRASOUND GIRL 397  
LT UNLIMITED EASE 9108  
CMC EVESIMAGE

CE	BW	WW	YW	MK	MCE	MTL	SC	CW	REA	FAT	MB	TSI
15.1	-2.9	59	99	18	11.3	47	0.7	13	0.59	0.022	0.04	239

Selling 3 IVF Sexed Heifer Embryos by SKS Super Puncher 423K. 1 Pregnancy Guaranteed What a powerhouse donor this highly successful show heifer has become and still maintains the look, style and balance that made her successful on the tanbark. This mating is exciting, combining Puncher with this good hiped, great fronted donor. The homework has been done, a heifer out of her could be a great one. Take advantage of this opportunity.

offered by Walker Farm



Lot 3





FTJ MONTICELLO 1806 • Full brother to Lot 4 & Sire of Lot 5

4

BULL PREGNANCY

POLLED

LT RIO BLANCO 1234 P ..... WCR PRIME CUT 764 PLD  
VPI FREE LUNCH 708T LT PRAIRIE MAID 4054  
VPI MISS DUCHESS 404 P ..... WCR PRIME CUT 764 PLD  
LT BLUE VALUE 7903 ET ..... VCR MISS DUCHESS 703 PLD  
FTJ LTRB905 LTBV SHANDY1527 LT BLUEGRASS 4017 P  
FTJ RIO BRAVO SHANDY 4042-905 LT UNLIMITED MAID 7184 P  
LT RIO BRAVO 3181 P  
BCC SHANDY 1123-4042 PET

CE	BW	WW	YW	MK	MCE	MTL	SC	CW	REA	FAT	MB	TSI
15.3	-3.7	65	118	19	12.3	52	1.7	34	0.6	0.065	0.43	1266.03

Recip with Bull Calf Due 4/1/24. This is a full brother to one of the most successful sires out there, FTJ Monticello 1908. He is the sire of the ABS bull Jefferson that has garnered the attention of the breed and his first calves are excellent. Monticello's mother was one of the top sellers at the National Sale at Cattleman's Congress. A unique combination of carcass and calving-ease. *offered by Aristo Farms*



WCF SIVER GUN 467 • Sire of Lot 6



CCC WC REDEMPTION 7143 PLD ET • Sire of Lot 7

5

HEIFER PREGNANCY

POLLED

VPI FREE LUNCH 708T ..... LT RIO BLANCO 1234 P  
FTJ MONTICELLO 1806 VPI MISS DUCHESS 404 P  
FTJ LTRB905 LTBV SHANDY1527 ..... LT BLUE VALUE 7903 ET  
VPI FREE LUNCH 708T ..... FTJ RIO BRAVO SHANDY 4042-905  
FINK PERFECTION 3834 7738 FL LT RIO BLANCO 1234 P  
FINK PERFECTION 7738 248 GM ET VPI MISS DUCHESS 404 P  
M6 GRID MAKER 104 PET  
M6 MS E46'S DUKE 248 PET

CE	BW	WW	YW	MK	MCE	MTL	SC	CW	REA	FAT	MB	TSI
14.2	-2.3	76	141	13	11.3	51	1.4	41	0.80	0.046	0.56	1291.95

Recip with a Heifer Calf Due 4/1/24. This is a mating that should work all day long. Sire and dam are both highly proven. You talk about generating dollars—it would take you a long time to count all the dollars they are responsible for. The Monticello daughters are great cows and this one will hit the donor pen young in life. I am sure this will be another one of these good profit-producing factories. *offered by Aristo Farms*

6

HEIFER PREGNANCY

POLLED

IQCR SILVER GUN Y31P ..... LT SILVER DISTANCE 5342P  
WCF MR SILVER GUN 467 IQCR MS GUNSMOKE CHAR 6014P  
WCF MISS FASTTRACK 012 ..... WCF MR FASTTRACK 711  
VPI FREE LUNCH 708T ..... WCF MS EDGE 8111  
FINK PERFECTION 3834 7738 FL LT RIO BLANCO 1234 P  
FINK PERFECTION 7738 248 GM ET VPI MISS DUCHESS 404 P  
M6 GRID MAKER 104 PET  
M6 MS E46'S DUKE 248 PET

CE	BW	WW	YW	MK	MCE	MTL	SC	CW	REA	FAT	MB	TSI
11	0.5	90	157	17	14.3	62	2.1	50	1.17	0.005	0.45	1302.06

Recip with Heifer Calf Due 4/1/24. The donor dam here has more than 50 progeny and is responsible for more than \$200,000 in sales at the Fink Bull Sales where her sons have topped it two different times. She is an EPD juggernaut that is at the top of the breed for almost every trait. Silver Gun genetics have been very popular this spring and every daughter you see has a perfect udder and a desirable EPD profile. *offered by Aristo Farms*

7

HEIFER PREGNANCY

POLLED

CCC WC RESOURCE 417 P ..... LT RUSHMORE 8060 PLD  
CCC WC REDEMPTION 7143 PLD ET WC CCC BLUE GIRL 1528 P  
WC ROLLS ROYCE 3177 P ET ..... TR PZC RAPID FIRE 9775 ET  
EC BIG DEAL 979 PLD ..... WCCC MISS ALLIANCE 428  
RBM JASMINE F251 EC DONE DEAL 5052 PLD  
EC JASMINE 561 PLD ..... IQCR MS ROCKY JO 979P  
RAILE 2250 T077  
WFR DREAMER 276 P

CE	BW	WW	YW	MK	MCE	MTL	SC	CW	REA	FAT	MB	TSI
8.8	0.3	70	121	28	8.1	63	0.5	26	0.89	0.41	0.39	1265.34

Recip with a Heifer Calf Due 4/1/24. Redemption has become a sire that makes cows and those that can hang banners. This heifer calf is out of Keystone's dam and she's a good one. Her choke front and softness shows the Resource influence could really work here. Study your lesson—high marbling, good growth and well-known genetics. Go to town for the big show or have the next donor. *offered by Aristo Farms*





8

8/20/2019  
POLLED  
F1284775

## WH MAMIE 916 PLD

LHD MR PERFECT Y416 ..... WCR SIR PERFECTION 734  
SR/NC FIELD REP 2158 P ET ..... LHD MS SHOWME OFF W159  
SR LADY EASE 914 ET ..... VCR SIR DUKE 914 PLD  
JASR WING MAN 46X ..... CCF LADY GERMAINE 718PET  
WH KALEY 512 PLD ..... PF PARATROOPER 8235 P  
SC MISS 452-D 1210P ..... JASR FERGIE 47 T PLD  
LT BRIDGER 9191 PLD  
SC MISS SENSATION 0609 P

CE	BW	WW	YW	MK	MCE	MTL	SC	CW	REA	FAT	MB	TSI
9.9	-0.2	66	113	24	11.4	57	1.1	24	0.68	0.019	-0.11	245

**8A:** Polled bull calf born 9/25/23, BW: 81 lbs. Sired by the half brother to Triple Play, WH Morano 938 PLD. His EPD profile shows a lot of maternal potential. This cow is a 5-year-old that traces to the Germaine line through Field Rep on the top side and is out of one of those underdog Wing Man daughters that have worked so well at Cedar Hill. Due in the fall to the high TSI bull, LT Atlas 0251 PLD *offered by Windy Hill Charolais*



Lot 8A



9

8/20/2019  
POLLED  
F1294303

## WH NATELIE 917 PLD

D R REVELATION 467 ..... HOODOO SLASHER 1144  
BIG CREEK GAME CHANGER 192 PET ..... DR WC FOREVER LUCY 372ET  
EXL MIA 230M ..... SPARROWS ALLIANCE 513G  
LT BLUE VALUE 7903 ET ..... EXL KACEE 57K  
WC NADINE 1017 ..... LT BLUEGRASS 4017 P  
MISS NADINE MACK ..... LT UNLIMITED MAID 7184 P  
LT PREDICTABLE MAC 2059P  
LT WILLOW 6118 POLLED

CE	BW	WW	YW	MK	MCE	MTL	SC	CW	REA	FAT	MB	TSI
7.4	0.7	67	109	27	8.1	60	1.0	27	1.10	0.013	0.09	248.19

**9A:** Polled bull calf born 9/8/23, BW: 85 lbs. Sired by LCC Equator 1750. These are top genetics with Lock N Load in this young calf's pedigree and he's in the top 25% of the breed for MARB. This cow is one of the good Game Changer daughters out of an exceptional Blue Value daughter. She combines performance, maternal and carcass values. Due in September to LCC Equator 1750. *offered by Windy Hill Charolais*



Lot 9A



10

9/10/2019  
POLLED  
F1289118

## HF KYLIE 1439 P

LT-WC TEMPLETON 1483 PLD ET ..... LT CHEYENNE BLEND 7142 P  
WC CCC MAVERICK 5117 P ET ..... LT WYOMING BREEZE 7188 P  
BALDRIDGE SWEETHEART 7M ..... RC BUDSMYDAD 225 POLLED  
TR MR FIRE WATER 5792RET ..... BALDRIDGESWEETHEART444ET  
LH HF KHLOE 1432 P ..... THOMAS OAHE WIND 0772ET P  
D&D MS KENNEDY 1430 PLD ET ..... THOMASSWISSERSWEET1764ET  
WC CCC BUD HEAVY 903 PLD ET  
D&D MISS KENNEDY

CE	BW	WW	YW	MK	MCE	MTL	SC	CW	REA	FAT	MB	TSI
8.6	0.6	63	103	26	9.4	57	1.5	22	0.71	0.010	-0.03	237

**10A:** Polled bull calf born 9/4/23, BW: 87 lbs. Sired by FH Cowboy Code 1091 P and he is a good one. This Maverick daughter comes with great lineage tracing to National Champions or Reserve National Champions on both sides. The Kennedy cow family has produced a lot of dollars. PE'd from 11/30/23 to 2/10/24 to the Silver Gun son, FH Gun Show 0075 P. *offered by Rolling Hills Charolais*



FH COWBOY CODE 1091 P • Sire of Lot 10A



11

8/20/2019  
HORNED  
EF1286401

## PROPP STANDARD LADY 907

LT RIO BRAVO 3181 P ..... LT RIO BLANCO 1234 P  
M6 NEW STANDARD 842 P ET ..... LT 7N OF DUKE 9083 PLD  
M6 MS GRID MAKER 2175 ET ..... M6 GRID MAKER 104 PET  
M6 COOL REP 8108 ET ..... M6 MS E46'S DUKE 248 PET  
ROR COOL LADY 279 ..... M6 COOL DUDE 6463 P ET  
ROR MS RANCHER 435 ..... SR LADY EASE 914 ET  
M6 RANCHER CHOICE 9469 P  
ROR MISS MARK 233

CE	BW	WW	YW	MK	MCE	MTL	SC	CW	REA	FAT	MB	TSI
11.8	-1.0	62	112	25	8.2	56	1.7	25	0.78	-0.002	0.19	258

**11A:** Polled heifer calf born 9/26/23, BW: 70 lbs. Sired by DPC Copy White 087C ET. This is a super fancy show prospect with a little different pedigree on the top, but she has potential. There aren't enough words to describe what kind of cows the New Standard daughters are as they have served as the foundation for many successful programs. PE'd from 12/1/23 to sale date to DPC Copy White 087C ET. *offered by ECP Cattle*



Lot 11A





LT PATRIOT 4004 PLD • Sire of Lot 12



M6 GRID MAKER 104 P ET • Sire of Lot 13



RBM FARGO Y111 • Sire of Lot 14



JMAR JEFFERSON 8M11 • Service sire of Lots 14 &amp; 15



12

12/2/2019  
POLLED  
F1304094

## ORR TRADITION 9120P

LT LEDGER 0332 P ..... LT BLUEGRASS 4017 P  
**LT PATRIOT 4004 PLD** ..... LT BRENDA 6120 PLD  
 LK MISS RIO 2119 ..... LK DISTANT RIO 900  
 RAILE SOVEREIGN J827 Y064 ..... FINK 8790 OF 2126 GM  
**ORR'S TRADITION 617P** ..... RC NICHOLE T082 V175  
 ORR'S MS TRADITION 352 ..... WR WRANGLER W601  
 ORR'S MS TRADITION 939P

CE	BW	WW	YW	MK	MCE	MTL	SC	CW	REA	FAT	MB	TSI
9.5	-1.3	77	136	28	7.5	66	1.0	37	0.72	0.025	0.06	273

**12A:** Polled heifer calf born 9/29/23. Sired by the marbling sire FTJ Monticello 1806. A Patriot daughter that's in her prime and she brings a really good Monticello heifer to town. Top 3% for WW & YW; top 6% TSI, those are the kind of numbers you look for. Females like this are turn key with the market building momentum. Al'd 12/9/23 to the big numbered WCF Mr. Silver Gun 467. *offered by A&L Davis Charolais*



13

11/4/2019  
POLLED  
F1339465

## LTFT MS GRIDMAKER 9114 P

WCR SIR TRADITION 066 ..... WCR SIR TRADITION 4402  
**M6 GRID MAKER 104 PET** ..... IDEAL 809 45 OF 25  
 VCR MISS MAC IV 317 ..... WCR SIR FA MAC 2244  
 OAKDALE DUKE 9003P ..... VCR MISS DUCHESS 113 PLD  
**PC PATSY 1818** ..... VCR SIR DUKE 135 PLD  
 PC MISS SILVER PRO 8925 ..... MISS VELVEETA JANE 630  
 LT EASY PRO 1158 PLD  
 PC MISS SILVER R813

CE	BW	WW	YW	MK	MCE	MTL	SC	CW	REA	FAT	MB	TSI
13.3	-1.8	57	107	33	9.6	61	0.7	16	0.70	-0.006	0.22	256

**13A:** Polled heifer calf born 9/3/23, BW: 68 lbs. Sired by LT Rushmore 8060 PLD. She ranks in the top 8% and 20% of the breed for Milk & Total Maternal EPDs respectively. Grid Maker daughters always get the job done and this one is no exception, tracing to a 9003 daughter from the legendary Parrish herd that produced many top sellers in Strafford. Al'd 11/26/23 to LT Ledger 0332. Safe in calf. Due 9/6/24. *offered by Randy Lightfoot*



14

8/24/2021  
POLLED  
F1320197

## DC MS POMONA FARGO C120P

SPARROWS FARGO 811U ..... WINN MANS LANZA 6105  
**RBM FARGO Y111** ..... SPARROWS DELIGHT 74L  
 HC RHINESTONE 5100 ..... LT EASY PRO 1158 PLD  
 COOLEY ROYCE 1107T39 ..... HC JACK 2082  
**DC MS POMONA ROYCE C515P** ..... SCHURRTOP HCR RANCHER  
 DC MS POMONA KOJACK C004P ..... MS COOLEY S DUKE 1107N60  
 BALDRIDGE KOJACK 29K  
 DC MS POMONA FLASH C804 P

CE	BW	WW	YW	MK	MCE	MTL	SC	CW	REA	FAT	MB	TSI
7.1	1.0	56	113	31	6.8	59	0.9	27	0.72	0.028	0.01	253

**14A:** Polled bull calf. BW: 83 lbs. Sired by the Landmark son, MB-DC Pomona Perseid C102 P. Here's a Fargo daughter that has some look to her and for all the red Charolais enthusiasts, she has a red tint and could add genetic diversity to many red programs. These Corman females are well known for their ability to work in the Ozarks. Red or white, she fits the bill. Al'd 11/20/23 to the ABS bull, JMAR Jefferson 8M11. *offered by Corman Charolais*



15

4/1/2017  
POLLED  
F1267669

## DC MS POMONA BLUEGRASS C 718 P

LT BLUEGRASS 4017 P ..... LT ASSERTION 1277 P  
**DC POMONA BLUEGRASS C 416 P** ..... LT PEARL'S BREEZE 2236 P  
 DC MS POMONA PROGRAM C229P ..... DC POMONA LONG PROGRAM C931P  
 BALDRIDGE KOJACK 29K ..... DC MS POMONA GRID MAC C022 P  
**DC MS POMONA KOJACK C004P** ..... BALDRIDGE FASTTRACK 82F  
 DC MS POMONA FLASH C804 P ..... BALDRIDGE ELVIRA 95H  
 PLT SIR DUKES FLASH 5527  
 DC MS POMONA GRID C608 P

CE	BW	WW	YW	MK	MCE	MTL	SC	CW	REA	FAT	MB	TSI
5.7	2.4	58	100	43	9	71	0.4	10	0.59	-0.009	0.16	241

**15A:** Polled heifer calf born 8/26/23, BW: 78 lbs. Sired by OW Lead Time 6294 PLD. These Bluegrass bred females always excel in maternal traits and this one is no exception. She is kind of "Old School" as you look at her pedigree, but genetics like this have always been good. There's a splash of this and that, but it came together with this female. Al'd 11/20/23 to JMAR Jefferson 8M11. *offered by Corman Charolais*





16

1/5/2021  
POLLED  
EF1321633

## DC GRETA D195

LT AUTHORITY 7229 PLD ..... LHD CHOTEAU B1669 P  
**LT BADGE 9184 PLD** ..... LT KATY 4273 PLD  
 LT MADALYNN 6108 PLD ..... LT PATRIOT 4004 PLD  
 LT LEDGER 0332 P ..... LT MADALYNN 0154 P  
**DC GRETA 61 PD ET** ..... LT BLUEGRASS 4017 P  
 CREEK CUT GRETA 576P ET ..... LT BRENDA 6120 PLD  
 M6 GRID MAKER 104 PET  
 RLL GOIN' PLACES 1329PET

CE	BW	WW	YW	MK	MCE	MTL	SC	CW	REA	FAT	MB	TSI
8.7	-0.6	83	139	27	8.9	69	1.5	38	0.81	0.015	0.04	273

**16A:** Polled heifer calf born 10/15/23. Sired by LT Affinity 6221 PLD. This is one of my favorite cow families. One can't help to love Greta, but Going Places was where it all started and these two females have always been special. She has a look, sired by Badge and her EPD profile is off the chart—she is in the top 6% of the breed or better in six traits and is just a 3-year-old. PE'd to WIA Riptide 064, observed bred 1/8/24. *offered by A&L Davis Charolais*



**CREEK CUT GRETA 576 P** • Dam of Lots 16 & 19



17

2/20/2018  
POLLED  
F1259311

## LT MS MO BOB 825

PC MISSOURI BOB 1227 ..... OAKDALE DUKE 9003P  
**ACE MR MO BOB 3809X** ..... PC MISS BLUE GRASS 9210  
 ACE MS SANDY MARCIA 1809 ..... 1A MR SANDMAN BY ACE 809 P  
 M6 GRID MAKER 131T ..... ACE MS PRIME MARCIA 809  
**LT MAKER 501** ..... M6 GRID MAKER 104 PET  
 LT TORNADO 220 ..... JWK MIRANDA F208 ET  
 M6 TEXAS TORNADO 4215 PET  
 LT MS MAGNUM 281T

CE	BW	WW	YW	MK	MCE	MTL	SC	CW	REA	FAT	MB	TSI
16.8	-2.7	69	129	28	13.4	62	0.9	31	0.78	0.016	0.08	271

**17A:** Polled heifer calf born 10/1/23. Sired by WIA Riptide 064 P, a son of the great P125 donor. Lot 17 traces to Missouri Bob, who along with his mother, topped one of the Strafford sales and they have been functional producers. This granddaughter has a heavy dose of M6 genetics on the bottom and the neon lights start shining when you look at her EPDs, including top 6% for TSI. AI'd 12/9/23 to WCF Mr. Silver Gun 467. *offered by A&L Davis Charolais*



**WCF SILVER GUN 467** • Service Sire of Lot 17



18

8/26/2019  
POLLED  
F1294302

## WH LIBERTY 923 PLD

M6 COOL REP 8108 ET ..... M6 COOL DUDE 6463 P ET  
**M6 BELLS & WHISTLES 258 P** ..... SR LADY EASE 914 ET  
 M6 MS GAIN & GRADE 552 P ..... M6 GRID MAKER 104 PET  
 CCC WC RESOURCE 417 P ..... BCF MISS MAC 74  
**WH LIZZY 729 PLD** ..... LT RUSHMORE 8060 PLD  
 BARS MS PREVIEW 418 P ET ..... WC CCC BLUE GIRL 1528 P  
 JWK IMPRESSIVE D040 ET  
 RC MS BUD 418 POLLED

CE	BW	WW	YW	MK	MCE	MTL	SC	CW	REA	FAT	MB	TSI
10.7	-0.6	53	104	11	4.3	37	1.1	12	0.69	0.015	0.34	255

**18A:** Polled bull calf born 1/11/24, BW: 77 lbs. Sired by LCC Equator 1750, another high marbling calf from Windy Hill. These good daughters of the \$105.00 Bells are going to become scarce because I only know of about 20 units of semen left on this breed legend in the country. She is special and one of those blue collar type of cows that just gets the job done. Top 2% for MARB and her scan data backs it up. *offered by Windy Hill Charolais*



**Lot 18**



19

8/30/2020  
POLLED  
EF1310683

## WH RITA 030 PLD

LHD MR PERFECT Y416 ..... WCR SIR PERFECTION 734  
**SR/NC FIELD REP 2158 P ET** ..... LHD MS SHOWME OFF W159  
 SR LADY EASE 914 ET ..... VCR SIR DUKE 914 PLD  
 M6 GRID MAKER 104 PET ..... CCF LADY GERMAINE 718PET  
**CREEK CUT GRETA 576P ET** ..... WCR SIR TRADITION 066  
 RLL GOIN' PLACES 1329PET ..... VCR MISS MAC IV 317  
 WCR SIR FA MAC 2244  
 VCR MISSPERFECTION0119PD

CE	BW	WW	YW	MK	MCE	MTL	SC	CW	REA	FAT	MB	TSI
10.8	-1.6	63	111	23	10.2	55	1.0	23	0.87	0.001	-0.02	251

**19A:** Polled heifer calf born 1/2/24, BW: 78 lbs. Sired by LCC Equator 1750. These good Greta influenced females keep coming and this is a great mating. When you put Germaine and Greta in the same pedigree only good things happen. This mating was designed to make females and if you want to add producers to the herd, this pair will be good all day, every day. *offered by Windy Hill Charolais*



**Lot 19**





**LT LEDGER 0332 PLD** • Sire of Lots 20 & 21

20

6/3/2015  
POLLED  
EF1222327

## RF ASHLEE 5202 ET

LT BLUEGRASS 4017 P	LT ASSERTION 1277 P
<b>LT LEDGER 0332 P</b>	LT PEARL'S BREEZE 2236 P
LT BRENDA 6120 PLD	LT RIO BRAVO 3181 P
	LT BRENDA'S EASE 3055PLD
VCR SIR DUKE 914 PLD	WCR SIR DUKE 761
<b>OW ASHLEE 0063 P ET</b>	WCR MISS MAC IV 534
LEMMON ACTRESS X140	CCC KNOCKOUTS ACTOR 3161
	LEMMON PRINCESS 3148

CE	BW	WW	YW	MK	MCE	MTL	SC	CW	REA	FAT	MB	TSI
10.6	-0.7	59	113	20	7.5	49	1.3	26	0.60	0.031	0.13	256

**20A:** Polled bull calf born 2/1/24. Sired by LT Atlas 0251 PLD, low birth and high TSI. Here's one of the Ledger daughters we all talk about and even though she's carrying a little age, her bull calf will pay for the package. A half sister to the X-Factor bull and tracing to the great X140, she has a few more in her. The pedigree is worth seeing what she can do.

*offered by Hale Farms*

22

3/9/2019  
POLLED  
F1283967

# CHATEAU MS NANCY 1706-1908

S\$ MONTANA SILVER•••••	\$ CECILE COBB
NWMSU DOC SILVER 362 PLD	\$ STAGE'S MISS DC BAR
NWMSU DOLORES ET 0035•••••	HCR FLASH 5074 POLLED
	BBCR DOLORES 337 PLD
CCC WC RESOURCE 417 P •••••	LT RUSHMORE 8060 PLD
CHATEAU MS NANCY 1301-1706	WC CCC BLUE GIRL 1528 P
SHF MS NANCY'S FIRE 1301 •••••	SHF FIRE POWER 0080
	SHF PERFECT NANCY

CE	BW	WW	YW	MK	MCE	MTL	SC	CW	REA	FAT	MB	TSI
10.2	-2.1	61	114	32	7.4	62	0.6	21	0.36	0.054	0.33	259

AI'd 6/7/23 to LT Countdown 9712 PLD. PE'd from 6/12/23 to 8/1/23 to NWMSU Tank 268 PLD. A nice 5-year old daughter of Doc Silver. This one could be a sleeper. She is top 3% for MARB and 25% TSI with some maternal behind it. These cattle are functional and problem free.

*offered by Chateau Cattle Co*

24

2/16/2016  
POLLED  
F1233615

**NWMSU WONDER GIRL 3123-668**

M6 COOL DUDE 6463 P ET .....	M6 FUNCTION 169 PET
<b>M6 COOL REP 8108 ET</b>	MISS LPF 630 MAC
SR LADY EASE 914 ET .....	VCR SIR DUKE 914 PLD
	CCF LADY GERMAINE 718PET
NWMSU BIG TIME 166 .....	WC BIG BEN 9036 P
<b>NWMSU WONDER GIRL 3123</b>	NWMSU IMPRESSIVE 359
NWMSU WONDER GIRL 657 .....	NWMSU WIND POWER 398 PLD
	NWMSU WONDER GIRL 861

CE	BW	WW	YW	MK	MCE	MTL	SC	CW	REA	FAT	MB	TSI
17.7	-5.1	48	87	23	8.3	47	1.2	6	0.48	-0.008	0.12	237

**24A:** Polled heifer calf born 3/3/24, BW: 95 lbs. Sired by NWMSU Freedom 282 PLD. Cool Rep daughters are factories and this one just happens to come with extra calving-ease and impressive scan data. When she was a yearling she ratioed 105 for marbling. If you know anything about NWMSU, data is just as important as genetics.

*offered by NWMSU*

21

3/17/2017  
POLLED  
EF1270613

# GHC MARION 7011

LT BLUEGRASS 4017 P ..... LT ASSERTION 1277 P  
**LT LEDGER 0332 P** LT PEARL'S BREEZE 2236 P  
 LT BRENDA 6120 PLD ..... LT RIO BRAVO 3181 P  
 LT BRENDA'S EASE 3055PLD  
 BALDRIDGE FASTTRACK 82F ..... LT UNLIMITED EASE 9108  
**OW MISS MARION 0025 ET** BALDRIDGE SWEETHEART 53D  
 SCF MISS BONNIE MAC ..... PD LIBERTY MAC 221  
 WC MISS BONNIE 5150

CE	BW	WW	YW	MK	MCE	MTL	SC	CW	REA	FAT	MB	TSI
12.3	-1.2	62	114	14	12.5	45	1.3	23	0.62	0.041	0.12	255

PE'd 6/1/23 to 9/1/23 to WC Intensity 1672 P, he is in the top 8% or better for seven traits including a top 4% TSI. The Ledger influence still sorts to the top and this one is out of Ozark's royalty, the great Marion cow that has produced many champions along with a bunch of dollars. This 7-year-old would make an ideal candidate for the donor pen.

*offered by Hale Farms*

23

3/22/2020  
POLLED  
F1294066

## NWMSU WONDER 251-0117

SHF FIRE POWER 0080 .....	TR MR FIRE WATER 5792RET
<b>CHATEAUS SOLAR POWER 1612</b>	ACE MS DYNASTY 7117
CHATEAUS SUNRISE 63-4111 PLD .....	WC BIG BEN 9036 P
	CHATEAUS SUNRISE PLD 63
NWMSU DOC SILVER 362 PLD .....	\$S MONTANA SILVER
<b>NWMSU SILVER WONDER 251</b>	NWMSU DOLORES ET 0035
NWMSU WONDER 8115-085 .....	NWMSU BLUEGRASS 496-873
	NWMSU WONDER 178-8115

CE	BW	WW	YW	MK	MCE	MTL	SC	CW	REA	FAT	MB	TSI
11.6	-2.2	65	117	16	9.2	49	0.9	25	0.55	0.022	-0.11	252

Due 3/16/24 to NWMSU Freedom 282 PLD. A great combination of growth and calving ease. She ranks in the top 25% for BW, WW and YW, not many four-legged cow critters will number up like that. Just a 4-year-old, take advantage of these genetics and build on the foundation NWMSU has built.

offered by NWMSU

25

3/5/2019  
POLLED  
F1293538

**NWMSU DOLORES 790-972**

MERIT ROUNDUP 9508W .....	MXS VERMILLION 527R
<b>NWMSU MERIT ROUNDUP 698</b>	MERIT YOLANDA 7244T
FINK LADY 5783 2287 PRO.....	LT EASY PRO 1158 PLD
	FINKS LADY 2287 4X6066ET
CCC WC RESOURCE 417 P .....	LT RUSHMORE 8060 PLD
<b>NWMSU DOLORES 370-790</b>	WC CCC BLUE GIRL 1528 P
NWMSU DOLORES 370 .....	NWMSU BIG TIME 166
	NWMSU DOLORES 1114

CE	BW	WW	YW	MK	MCE	MTL	SC	CW	REA	FAT	MB	TSI
14.9	-5.8	60	109	28	5.8	58	0.7	26	0.70	0.026	0.07	253

**25A:** Polled bull calf born 3/5/24, BW: 85 lbs. Sired by NWMSU Freedom 282 PLD, he is top 1% of the breed for MARB. Another female with calving-ease built in and a Canadian twist to her pedigree on the top side. Her BW EPD indicates that you could breed this one to about any bull in the breed. NWMSU always brings solid females.

offered by NWMSU



**26**

## RHC MS GERMAINES RESOURCE 12BP

3/19/2019  
POLLED  
EF1274662

LT RUSHMORE 8060 PLD .....  
**CCC WC RESOURCE 417 P**  
WC CCC BLUE GIRL 1528 P .....  
M6 NEW STANDARD 842 P ET .....  
**M6 NEW GERMAINE 5149 P ET**  
M6 COOL GERMAINE 1145 P ET .....  
LT RIO BRAVO 3181 P  
LT BRENDA'S EASE 3055PLD  
LT BLUE VALUE 7903 ET  
CCC BAD GIRLFRIEND U146 P ET  
LT RIO BRAVO 3181 P  
M6 MS GRID MAKER 2175 ET  
M6 COOL REP 8108 ET  
M6 0383 GERMAINE 8163 P ET

CE	BW	WW	YW	MK	MCE	MTL	SC	CW	REA	FAT	MB	TSI
12.4	-1.4	71	127	35	5.3	70	0.7	27	0.91	0.015	0.25	272

Due 3/12/24 to FH Cowboy Code 1091 P and the resulting calf will be at the top of most traits. I don't know how I talked Ross and Tory out of this one, but when they come to the sale they are going to bring a good one. She checks all the boxes, a great donor dam, due any time to Code and what a set of EPDs. Top 9% WW; 8% YW; 5% Milk; 3% MTL; 8% REA; 9% MARB and 6% TSI. Don't miss this one. *offered by Rolling Hills Charolais*



**M6 NEW GERMAINE 5149 P** • Dam of Lot 26

**27**

## RF MS NANCY 6228 ET

11/28/2016  
POLLED  
EF1281027

THOMAS OAHE WIND 0772ET P .....  
**TR MR FIRE WATER 5792RET**  
THOMASSWISSERSWEET1764ET .....  
LT WYOMING WIND 4020 PLD .....  
**RF-ACE MS NANCY 7711 P ET**  
ACE MS NANCY 9145 PLD ET .....  
LT WYOMING WIND 4020 PLD  
THOMAS MS CAMELOT 5646  
LHD CIGAR E46  
THOMAS MS BONANZA 8698  
SCHURRTOP 5627  
LT CHAP'S LADY 2170P  
WCR PRIME CUT 764 PLD  
WCR MISS L06 9407 ET

CE	BW	WW	YW	MK	MCE	MTL	SC	CW	REA	FAT	MB	TSI
6.5	0.3	53	91	20	6.9	47	1.4	13	0.70	0.027	0.04	230

**27A:** Polled bull calf born 1/4/24. Sired by LT Atlas 0251 PLD. The good Firewaters are great cows and this one goes back to one of the original Nancy cows that were so legendary for Three Trees. Looking through her pedigree there are some banner hanging females and a \$50,000 Zsa Zsa, so there's a lot to like.

*offered by Hale Farms*



**LT ATLAS 0251 PLD** • Sire of Lot 27A

**28**

## BRCHE MELANIA 7516

3/20/2017  
POLLED  
EF1240395

TR MR FIRE WATER 5792RET .....  
**TR PZC MR TURTON 0794 ET**  
THOMAS MS IMPRESSIVE0641 .....  
LT EASY PRO 3151 PLD .....  
**KR MISS EASY PRO 8063**  
KR MS EASY RIDE 3104 .....  
THOMAS OAHE WIND 0772ET P  
THOMASSWISSERSWEET1764ET  
JWK IMPRESSIVE D040 ET  
BCI MISS VERYLIMIT 6033P  
LT EASY PRO 1158 PLD  
LT ALLI'S ROSE 9110 P  
LT EASY RIDE 1153 P  
KR MS HIGH CLASS 9012

CE	BW	WW	YW	MK	MCE	MTL	SC	CW	REA	FAT	MB	TSI
9.9	-0.9	52	91	20	11.4	46	0.6	16	0.83	0.002	-0.01	233

Due before the sale to TR Mr. Carbon Copy 1925 J ET, a son of the National Champion Carbon Copy out of the great Mustang Sally. This is a rare opportunity because this is a three quarter sister to the great show bull 100 Proof. Combining 0641 and the KR 8063 female is cow power at its finest. There is a lot of potential for the calf in utero, but pay attention here, especially if you looking to hit the show road in the future. *offered by Circle M Charolais*



**TR PZC TURTON 0794** • Sire of Lot 28

**29**

## GHC ERINN 9078

2/28/2019  
POLLED  
EF1291556

LT BLUEGRASS 4017 P .....  
**RBM TR RHINESTONE Z38**  
HC RHINESTONE 5100 .....  
TR MR FIRE WATER 5792RET .....  
**DSUL ERINN Y32 ET**  
OCR RED SASHA L37 .....  
LT ASSERTION 1277 P  
LT PEARL'S BREEZE 2236 P  
LT EASY PRO 1158 PLD  
HC JACK 2082  
THOMAS OAHE WIND 0772ET P  
THOMASSWISSERSWEET1764ET  
MGM RED SASH IV  
OCR MISS MAC H02

CE	BW	WW	YW	MK	MCE	MTL	SC	CW	REA	FAT	MB	TSI
6.5	1.8	53	98	21	3	47	0.6	16	0.79	0.018	0.16	241

PE'd from 61/23 to 9/1/23 to WC Intensity 1672 P. This female also packs a punch from a pedigree standpoint and traces to a great red bull from the Michaelis operation in Texas. The Erinn donor has been known to produce some color and this could be another opportunity for those with red genetics to add some diversity to the gene pool.

*offered by Hale Farms*



**RBM TR RHINESTONE Z38** • Sire of Lot 29





LT BLUEGRASS 4017 PLD • Service sire of Lot 30



RBM KEYSTONE H41 • Service sire of Lot 31



Lot 32



WC SOUTHERN COMFORT 8043 P • Sire of Lot 33

30

## LTFT MS SILVER DUKE 0924 P

9/24/2020  
POLLED  
F1338967

VCR SIR DUKE 135 PLD ..... VCR SIR DUKE 914 PLD  
OAKDALE DUKE 9003P ..... VCR MISS MAC IV 902 PLD  
MISS VELVEETA JANE 630 ..... JWK STRIKER D063 ET  
WCR MISS TRADITION 3478  
VCR SIR SILVERMAN 508 P ..... LT SILVER EDGE 2289 PLD  
WCR MS SILVERMAN 9219 P ..... VCR MISS MAC IV 224 ET P  
WCR MISS MAC 995P ..... W4F MAACADUKE 210 PLD  
SKYMONT MISS 4064

CE	BW	WW	YW	MK	MCE	MTL	SC	CW	REA	FAT	MB	TSI
11.6	-1.8	61	118	29	7.3	59	0.9	22	0.49	0.023	0.09	261

Her mother is a cornerstone of the Lightfoot operation. Since acquiring 9219 from the first Wienk Mature Cow Dispersal, she has consistently been the a producer of both bulls and females. Every female she has produced has been retained. Her dam knows how to make them. Al'd 11/6/23 to LT Bluegrass 4017. Safe in calf. Due 8/17/24.

offered by Randy Lightfoot

31

## BCC5 BULLARD MOONEE

1/2/2021  
POLLED  
F1300278

M&M OUTSIDER 4003 PLD ..... LT LONG DISTANCE 9001 PLD  
BOY OUTLIER 812 ET PLD ..... M&M MS CARBINE 1567 PLD  
TR MS BERKLY 4711B ET ..... TR PZC MR TURTON 0794 ET  
TR MS MONTELLA 1572Y  
RBM TR RHINESTONE Z38 ..... LT BLUEGRASS 4017 P  
HC RHINESTONE 5100  
BCC5 BULLARD MOONSTONE ..... M6 BELLS & WHISTLES 258 P  
M6 MS JEWELL BELL 645 P ET ..... M6 MS NEW JEWEL 0155 PLD

CE	BW	WW	YW	MK	MCE	MTL	SC	CW	REA	FAT	MB	TSI
6.2	0.2	61	120	21	5.5	52	1.2	19	0.91	0.008	0.08	265

Due 4/28/24 to RBM Keystone H41

Moonie is a beautifully made daughter of Outlier. Her mother is a super stout, easy doing female that has made her way into our donor program. She descends from the all time great donor, M6 Ms New Jewel 0155 and her maternal grand dam was the sleeper of the M6 dispersal. We hate to see this one go, but you can't keep them all. offered by Bertsche Farms

32

## LAFRAISE KEHLANI 681

4/18/2021  
POLLED  
F1328082

CCC WC RESOURCE 417 P ..... LT RUSHMORE 8060 PLD  
LDSC BRCHE LUSCIOUS 1701 ..... WC CCC BLUE GIRL 1528 P  
3R'S ANGELINA 343A ET ..... TR MR FIRE WATER 5792RET  
MS COOLEY JPT 1410M10 ET  
LT LEDGER 0332 P ..... LT BLUEGRASS 4017 P  
LAFRAISE KEHLANI 966 ..... LT BRENDA 6120 PLD  
LAFRAISE KELLY ANN 906 ..... TR SMOKEONTHWATER ET  
LAFRAISE MARIE 891

CE	BW	WW	YW	MK	MCE	MTL	SC	CW	REA	FAT	MB	TSI
6.7	-0.2	59	106	22	4.4	51	1.2	20	0.69	0.049	0.15	247

Due 5/15/24 to GHC Reagan 9012 P.

Kehlani is a long bodied, feminine, strong milking daughter of the Denver champion, LDSC BRCHE Luscious 1701. The dam of Luscious is the famous National Champion "Jo Jo" cow. She also carries the influence of the female sire Ledger on the bottom side and is just a 3-year-old. offered by Lafrairie Farms

33

## ECP SOUTHERN SIR 2303

4/10/2023  
POLLED  
EM994747

M6 COMFORT ZONE 227 P ..... M6 FRESH AIR 8165 P ET  
WC SOUTHERN COMFORT 8043 P ..... M6 MS 104 DUKE 540 P ET  
WC SCS ASHLEE 6041 P ..... WC PARAMOUNT 4120 P ET  
WC SCS ASHLEE 4127 P ET  
LT ROYAL BLEND 7216 P ..... LT EASY BLEND 5125 PLD  
WC MISSY 5186 P ET ..... LT KAMI 3057 PLD  
WCCC MISS ALLIANCE 428 ..... SCC ALLIANCE 0026  
SCC LADY MAC K118

CE	BW	WW	YW	MK	MCE	MTL	SC	CW	REA	FAT	MB	TSI
11.3	-1.9	62	101	19	11.9	50	0.8	13	0.83	0.004	0.02	241

A well designed son of the calving-ease sire Southern Comfort. Her dam goes back to the K118 donor that has left many good ones out there. K118 traces to breed legends G560, Mac 2244 and 828. This young April yearling will make some quality daughters.

offered by ECP Cattle









Lot 38

**38**

9/23/2022  
POLLED  
EF1350676

## BYERGO HANNA 21 PLD ET

LT UNLIMITED EASE 9108 ..... BCR POLLED UNLIMITED 003  
PP MISS SHANDY 214 R194  
**LT EASY BLEND 5125 PLD**  
LT BRENDA 1014 PLD ..... WCR PRIME CUT 764 PLD  
LT BRENDA'S BREEZE 9207P  
ASC ELIMINATOR 032 ..... HCR EXONERATOR POLLED  
MISS HCR MAC 2308  
**BYERGO HANNA 819 POLLED**  
BYERGO HANNA 610POLLEDET ..... SCHURRTOP-DC INTIMIDATOR  
FR AURICULA A202 ET

CE	BW	WW	YW	MK	MCE	MTL	SC	CW	REA	FAT	MB	TSI
10.9	-1.3	67	112	17	10.8	51	0.8	27	0.61	0.008	0.03	249

AI'd 1/31/24 to LT Countdown 9712 P. PE'd from 2/12/24 to sale date to Byergo Choice Plus 29 PLD ET. She is a testament to the "Old School" genetics that helped the breed get where it is today. Some of the herd bulls in her pedigree were what breeders thought were cutting edge at one time and were heavily used. Some newer faces may not recognize these female producers, others will because they were good. *offered by Byergo Farms*



Lot 39

**39**

9/27/2022  
POLLED  
EF1350675

## BYERGO HANNA 22 PLD ET

LT WESTERN SPUR 2061 PLD ..... EATONS PREDICTOR 9230  
LT MAIDEN'S BREEZE 8242P  
**LT WESTERN EDGE 4057 PLD**  
LT DUCHESS OF MAC 7076 P ..... BBCR DUKE'S SON 786 PLD  
BBCR MAXINE 429  
ASC ELIMINATOR 032 ..... HCR EXONERATOR POLLED  
MISS HCR MAC 2308  
**BYERGO HANNA 819 POLLED**  
BYERGO HANNA 610POLLEDET ..... SCHURRTOP-DC INTIMIDATOR  
FR AURICULA A202 ET

CE	BW	WW	YW	MK	MCE	MTL	SC	CW	REA	FAT	MB	TSI
9.8	-2.5	64	113	28	11.7	61	1.0	22	0.64	0.010	0.00	252

AI'd 11/20/23 to LT Countdown 9712 P. PE'd from 2/12/24 to sale date to Byergo Choice Plus 29 PLD ET. She is in the top 25% for Milk, MCE, & MTL EPDs. Her flush brother is the top performing Charolais bull at the Midland Bull Test this year. He has 115 ADG, 105 WDA, & 104 Feed Efficiency ratios with a negative RFI (Residual Feed Intake).

*offered by Byergo Farms*

**40**

2/10/2022  
POLLED  
F1344970

## FH MS 104 CHARLOT 2004 P

WCR SIR TRADITION 066 ..... WCR SIR TRADITION 4402  
IDEAL 809 45 OF 25  
**M6 GRID MAKER 104 PET**  
VCR MISS MAC IV 317 ..... WCR SIR FA MAC 2244  
VCR MISS DUCHESS 113 PLD  
FH WIND 621 P ..... FH WIND 311 P ET  
FH MS 104 CIMMY 218 P  
**FH MS BREEZY 0053 PLD**  
BPC MISS R2 LD BU42 A002 PLD ..... LT LONG DISTANCE 9001 PLD  
BPC MISS CHARLOT BU42 P

CE	BW	WW	YW	MK	MCE	MTL	SC	CW	REA	FAT	MB	TSI
12.2	-0.9	61	103	23	7.4	53	0.3	17	0.80	-0.006	0.16	247

AI'd 11/20/23 to FH-MCR Free Lunch 947 P. PE'd 12/5/23 to 2/1/24 to ALT 137K. You can't go wrong with a Grid Maker daughter, especially when she's out of a Wind-bred female. Her dam traces to the great Charlot cow at Skeans Cattle Co. in Texas. Her service sire burst onto the scene at the annual Fox Hollow production sale with his first progeny commanding top dollar.

*offered by Fox Hollow Farms*



WCR COUNTY LINE 3132 P • Sire of Lot 42

**41**

8/27/2022  
POLLED  
F1345068

## FH MS 1845 BELL 2112 P

FINK 5638 1275 NS ..... M6 NEW STANDARD 842 P ET  
FINK STAR 1275 8526 BG  
**MCR NEW STANDARD 1845 P**  
MCR MS BELL 1422 PS ..... M6 BELLS & WHISTLES 258 P  
PR MISS 630 DUKE 554 ET  
M6 BELLS & WHISTLES 258 P ..... M6 COOL REP 8108 ET  
M6 MS GAIN & GRADE 552 P  
**MCR MS BELL 1423 P**  
MCR ROUNDUP 143 P ..... LT ROUNDUP 8056 PLD  
PR MS TOP PATSY DUKE 743 P

CE	BW	WW	YW	MK	MCE	MTL	SC	CW	REA	FAT	MB	TSI
20.1	-4.7	68	123	28	11.8	62	1.8	31	1.01	0.023	0.30	274

AI'd 11/20/23 to FH-MCR Free Lunch 947 P. PE'd 12/5/23 to 2/1/24 to ALT 137K. This is an easy to look at New Standard bred female out of a Bells daughter—maybe the most reliable cross in breed history. Cow power deluxe, she traces to a full sib to Duke 9003, Bell's mother and the legendary Germaine family. Top 1% for CE; 6% BW; 35% YW & MARB and 15% TSI.

*offered by Fox Hollow Farms*

**42**

2/21/2022  
POLLED  
F1351026

## FH MS 3132 ELVIRA 2046 P

WCR KINGSBURY 116 P ..... EATONS VISIONARY 2044 P  
WCR MISS POWEREDGE 9132 P  
**WCR COUNTY LINE 3132 P**  
WCR MS NO QUESTION 1237 P ..... CFL NO QUESTION 732  
KC MISS DESIGN 7593 P  
M6 GRID MAKER 104 PET ..... WCR SIR TRADITION 066  
VCR MISS MAC IV 317  
**FH MS 104 ELVIRA 1815 P**  
MCR MS LEDGER 1227 P ET ..... LT LEDGER 0332 P  
BALDRIDGE ELVIRA 162J

CE	BW	WW	YW	MK	MCE	MTL	SC	CW	REA	FAT	MB	TSI
6.8	2.1	74	126	25	4.6	62	0.8	17	0.60	0.004	0.18	263

AI'd 11/20/23 to FH MCR Free Lunch 947 P. PE'd 12/5/23 to 2/1/24 to ALT 137K. A really stout daughter of County Line tracing to the Elvira family. Her maternal grand dam is 11 and still making top-selling bulls every fall for Fox Hollow. Top 15% for WW and 25% for YW. She was held over on purpose because Fox Hollow is transitioning to a fall calving herd.

*offered by Fox Hollow Farms*





43

4/28/2022  
POLLED  
F1349064

## LAFRAISE MAYA 882

CCC WC RESOURCE 417 P .....  
**LDSC BRICHE LUSCIOUS 1701**  
3R'S ANGELINA 343A ET .....  
RBM TR RHINESTONE Z38 .....  
**LAFRAISE MAYA 28B ET**  
HARVIE MS IMPRESSIVE 267Z .....  
LT RUSHMORE 8060 PLD  
WC CCC BLUE GIRL 1528 P  
TR MR FIRE WATER 5792RET  
MS COOLEY JPT 1410M10 ET  
LT BLUEGRASS 4017 P  
HC RHINESTONE 5100  
TR MR FIRE WATER 5792RET  
THOMAS MS IMPRESSIVE0641

CE	BW	WW	YW	MK	MCE	MTL	SC	CW	REA	FAT	MB	TSI
6.7	-0.3	52	100	23	3.5	49	0.9	16	0.72	0.034	0.19	245

Due 4/25/24 to LaFraise New Standard 22A. From our show string comes this impeccable daughter of the Denver champion, Luscious. It's hard to design one much better from the side. She is moderate framed and huge ribbed with a strong top and great hip structure. Her sire is a son of the famous Champion "Jo Jo".

offered by LaFraise Farms



Lot 43



44

6/28/2022  
POLLED  
F1348879

## LAFRAISE EMERSON 202

M&M OUTSIDER 4003 PLD .....  
**BOY OUTLIER 812 ET PLD**  
TR MS BERKLY 4711B ET .....  
TR MR FIRE WATER 5792RET .....  
**LAFRAISE EMERSON 902C**  
LAFRAISE MARIE 891 .....  
LT LONG DISTANCE 9001 PLD  
M&M MS CARBINE 1567 PLD  
TR PZC MR TURTON 0794 ET  
TR MS MONTELLA 1572Y  
THOMAS OAHE WIND 0772ET P  
THOMASWISSERSWEET1764ET  
WCR PRIME TIME 908 P  
LAFRAISE MARIE 789

CE	BW	WW	YW	MK	MCE	MTL	SC	CW	REA	FAT	MB	TSI
4.8	1.1	58	108	22	5.3	51	1.1	16	0.90	0.009	-0.06	246

Due 4/24/24 to the popular calving-ease sire GHC Reagan 9012 P. Emerson is a daughter of the national champion producing show sire, BOY Outlier. Her heaving milking mother was a national show class winner back in her glory days. Emerson is extra long-sided with a great brood cow look.

offered by LaFraise Farms



Lot 44



45

4/8/2022  
POLLED  
EF1349491

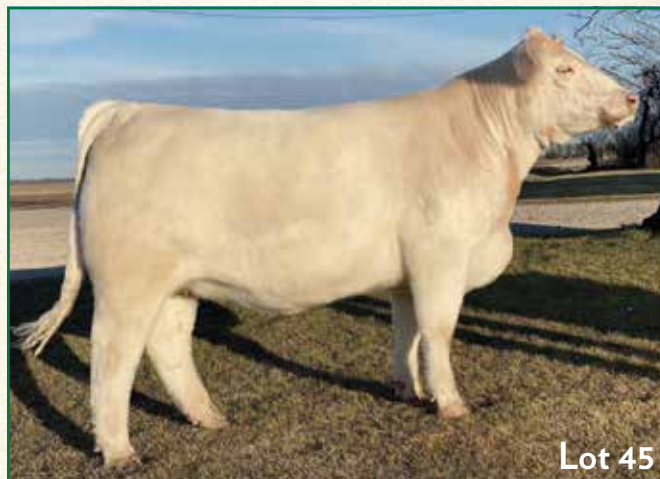
## LAFRAISE SWEETHEART 12A

CML DIABLO 2X .....  
**TR MR DIABLO 2742Z ET**  
HF MUSTANG SALLY 904 PLD .....  
TR MR FIRE WATER 5792RET .....  
**M&M MS FIREWATER 4017 PLD ET**  
M&M MS STEALTH 9509 PLD ET .....  
SPARROWS SANCHEZ 715T  
CML PLD WILMA 3S  
TR MR FIRE WATER 5792RET  
WELLS-JB PLATINUM LADY336  
THOMAS OAHE WIND 0772ET P  
THOMASWISSERSWEET1764ET  
DR STEALTH 574  
BALDRIDGE SWEETHEART 7M

CE	BW	WW	YW	MK	MCE	MTL	SC	CW	REA	FAT	MB	TSI
11.8	-1.5	59	106	28	10.1	58	1.8	23	0.95	0.001	-0.09	246

Due 4/28/24 to LaFraise New Standard 22A. Sweetheart is a daughter of the popular show sire, TR Mr Diablo 2742Z. Her donor dam, from the Baldridge Sweetheart 7M cow family, was our pick at the M&M dispersal sale. This beautiful young female is stout made and extra thick from behind.

offered by LaFraise Farms



Lot 45



46

2/15/2022  
POLLED  
F1340839

## FH MS Y111 CRYSTAL 2025 P

SPARROWS FARGO 811U .....  
**RBM FARGO Y111**  
HC RHINESTONE 5100 .....  
M6 BELLS & WHISTLES 258 P .....  
**MCR MS BELLS & WHISTLES 1524 P**  
MCR CRYSTAL 801 P .....  
WINN MANS LANZA 610S  
SPARROWS DELIGHT 74L  
LT EASY PRO 1158 PLD  
HC JACK 2082  
M6 COOL REP 8108 ET  
M6 MS GAIN & GRADE 552 P  
BALDRIDGE KOJACK 29K  
MCR CRYSTAL 5047 P ET

CE	BW	WW	YW	MK	MCE	MTL	SC	CW	REA	FAT	MB	TSI
17.7	-2.1	66	130	25	14	58	1.4	28	0.86	0.014	0.02	273

Al'd 11/20/23 to FH-MCR Free Lunch 947 P. PE'd 12/5/23 to 2/1/24 to ALT 137K. This bred heifer projects as the kind that will make herd bulls. Look and power that just says momma cow. The Fargo daughters do make cows and this one is in the top 4% for CE; 15% for YW and 15% TSI. She has all the tools.

offered by Fox Hollow Farms



Lot 46





Lot 47

## LAFRAISE EMPRESS 872

**47**  
4/3/2022  
POLLED  
F1349537

LT RIO BRAVO 3181 P ..... LT RIO BLANCO 1234 P  
**LT RUSHMORE 8060 PLD** LT 7N OF DUKE 9083 PLD  
 LT BRENDA'S EASE 3055PLD ..... LT UNLIMITED EASE 9108  
 LT BRENDA 1014 PLD  
 M&M OUTSIDER 4003 PLD ..... LT LONG DISTANCE 9001 PLD  
**LAFRAISE EMPRESS 20C** M&M MS CARBINE 1567 PLD  
 HARVIE MS IMPRESSIVE 267Z ..... TR MR FIRE WATER 5792RET  
 THOMAS MS IMPRESSIVE0641

CE	BW	WW	YW	MK	MCE	MTL	SC	CW	REA	FAT	MB	TSI
15.3	-3.6	60	108	34	7.1	64	1.1	21	0.65	0.043	0.07	250

Due in May to Lafraise New Standard 22A.

Empress is a deep bodied, soggy made daughter of the breed leading calving-ease and high milk bull, LT Rushmore 8060. Her powerhouse dam was a Division Champion at the American Royal. She is in the top 5% for Milk; 15% for CE and BW—a great combination.  
*offered by Lafraise Farms*

## FH 15C NANCY 3012 P

**49**  
2/10/2023  
POLLED  
F1351023

OW MAXIMIZER 3041 PLD ..... DC-OW MAXIMIZER 385PLD  
**KEYS COWBOY 15C** OW MISS SANDCREEK Y46  
 MISS KEY DEE 107A ..... KEYS JAXSON 200Y ET  
 MISS KEY DEE 42X  
 FH BIG EASY 1802 P ..... FINK 3804 OF 7738 FL  
**FH MS NANCY 1060P** M6 MS 104 GERMAINE 113 P  
 FH NANCY G15 ..... WC BIG BEN 9036 P  
 SKS NANCY E15

CE	BW	WW	YW	MK	MCE	MTL	SC	CW	REA	FAT	MB	TSI
13.8	-0.8	77	132	22	9.1	61	1.6	31	0.94	0.030	0.04	268

This is a fancy Cowboy daughter that ranks in the top 25% for CE; 7% WW; 15% YW and 25% TSI. She is out of a first calf heifer that features calving-ease genetics and the Nacy 6106 cow a full sib to 6100. This one could be special down the road.

*offered by Fox Hollow Farms*

## CMC DAZZLIN 043 PLD

**48**  
2/10/2023  
POLLED  
F1345651

M&M OUTSIDER 4003 PLD ..... LT LONG DISTANCE 9001 PLD  
**BRCHE SMOKE OUT 7503** M&M MS CARBINE 1567 PLD  
 CC SMOKETTE 4076 ET P ..... TR SMOKEONTHWATER ET  
 ALC KATE T07K  
 BIG CREEK GAME CHANGER 192 PET ..... D R REVELATION 467  
**DC DAZZLIN 06** EXL MIA 230M  
 PZC DAZZLIN' 008 ..... TR PZC MR TURTON 0794 ET  
 SCC MS BUD 418-1128 ET

CE	BW	WW	YW	MK	MCE	MTL	SC	CW	REA	FAT	MB	TSI
10.4	-1.3	62	104	19	6.8	50		18	0.76	0.018	-0.11	239

A good Outsider granddaughter from Circle M and if they bring one to town she's going to be good. Her half and three-quarter sisters have always been hits in Strafford. She traces to the only full sister to Budsmysdad, which makes her Charolais royalty.

*offered by Circle M Charolais*

## FH 15C BREEZY 3024 P

**50**  
2/12/2023  
POLLED  
F1351025

OW MAXIMIZER 3041 PLD ..... DC-OW MAXIMIZER 385PLD  
**KEYS COWBOY 15C** OW MISS SANDCREEK Y46  
 MISS KEY DEE 107A ..... KEYS JAXSON 200Y ET  
 MISS KEY DEE 42X  
 FH WIND 621 P ..... FH WIND 311 P ET  
**FH MS BREEZY 1048 P** FH MS 104 CIMMY 218 P  
 MCR WESTERN EDGE 140 P ..... MCR WESTERN EDGE 771 P  
 PLT MS EASY ELIMINATOR

CE	BW	WW	YW	MK	MCE	MTL	SC	CW	REA	FAT	MB	TSI
11.3	-0.3	63	93	31	10.9	62	1.3	13	0.68	-0.005	0.01	228

Another good Cowboy 15C daughter out of a first calf heifer. These females make cows and have genetics from two programs that know a little bit about making cows. She's well put together and ratioed 105 at weaning. These two half sisters should stay together because they will make money.

*offered by Fox Hollow Farms*

## AFG VANITY 3748 7548 PDC ET

**52**  
9/1/2023  
POLLED  
EF1341685

EATONS BIG BUD 10402 POLLED ..... EATONS TREASURE 8076  
**PLEASANT DAWN CHISUM 216A** MISS GRAND HOUSE 360  
 PLESANT DAWN MAGGIE 316X ..... PLEASANT DAWN MAGNUM 56T  
 PLEASANT DAWN RIO 216P  
 ONE PENNY BLANCO FLASH 6424 ..... HCR FLASH 5074 POLLED  
**FINK VANITY 7548 3877 BF** DOUBLE-H BOBSY 424P  
 FINK VANITY 3877 0293 GS ..... FINK GOLD STANDARD 0153  
 FINK VANITY 0293 7778 BG

CE	BW	WW	YW	MK	MCE	MTL	SC	CW	REA	FAT	MB	TSI
8.4	-0.3	66	132	24	5.8	57	1.1	35	0.84	0.011	0.25	279

A young September daughter of the Canadian sire Chisum. High marbling and TSI on this one and her somewhat outcross pedigree should work in any program. Females like this out of proven donor cows are always a good investment.

*offered by Aristo Farms*

## AFG 3482 MISS 7982 KS ET

**51**  
7/27/2023  
POLLED  
EF1342441

LT RUSHMORE 8060 PLD ..... LT RIO BRAVO 3181 P  
**RBM KEYSTONE H41** LT BRENDA'S EASE 3055PLD  
 RBM JASMINE F251 ..... EC BIG DEAL 979 PLD  
 EC JASMINE 561 PLD  
 VPI FREE LUNCH 708T ..... LT RIO BLANCO 1234 P  
**FINK MISS 7982 1161 FL** VPI MISS DUCHESS 404 P  
 FINK MISS 1161 7736 BG ..... LT BLUEGRASS 4017 P  
 FINK MISS 7736 1803 GM ET

CE	BW	WW	YW	MK	MCE	MTL	SC	CW	REA	FAT	MB	TSI
14.4	-2.2	77	134	24	8.3	63	1.0	29	0.42	0.062	0.40	276

A fancy July heifer that will fit nicely into a fall program and she has stellar EPDs—Top 20% CE; 7% WW; 19% YW; 2% MARB and 15% TSI. These high marbling females have been in demand and can work with a variety of sires.

*offered by Aristo Farms*

## AFG MISS LADY 3653 653 BF ET

**53**  
8/1/2023  
POLLED  
EF1341752

HCR FLASH 5074 POLLED ..... HCR EXODUS 9033 POLLED  
**ONE PENNY BLANCO FLASH 6424** MISS HCR MAC 2015 POLLED  
 DOUBLE-H BOBSY 424P ..... LT RIO BLANCO 1234 P  
 DOUBLE-H DANCEWITHME209M  
 FINK GOLD STANDARD 0153 ..... M6 NEW STANDARD 842 P ET  
**FINK MISS LADY 653 023 GS** FINKS MISS 25503575BUDET  
 FINK MISS LADY 023 BG ..... LT BLUEGRASS 4017 P  
 MF MISS LADY 6868

CE	BW	WW	YW	MK	MCE	MTL	SC	CW	REA	FAT	MB	TSI
8.1	0.3	69	132	18	3.9	52	0.9	31	0.75	-0.015	0.42	282

She is very closely related to the dam of lot 52 and high marbling seems to go hand-in-hand with these genetics. Her paternal grand sire, Flash was one of the first Charolais bulls identified as a sire that would add this needed trait and his daughters have paid the bills for a lot of operations.

*offered by Aristo Farms*



54

## ECP COOL WHITE RUGER 2304

4/12/2023  
POLLED  
F1339166

MJ NS TIAGO 1432 .....  
**DPC COPY WHITE 087C ET**  
MISS KEY VIRGINIA 87C.....  
  
WC RUGER 2103 P ET .....  
**TTT MISS RUGER 526**  
TTT BUTTERMILK .....

KEYS ALL STATE 149X  
CARDINALS LADY G176 P  
OW MAXIMIZER 3041 PLD  
MISS KEY VIRGINIA 41A  
D&D INXS  
WCCC MISS ALLIANCE 428  
LC TRIGGER 0209 POLLED  
NF MISS STEMWINDER F613

CE	BW	WW	YW	MK	MCE	MTL	SC	CW	REA	FAT	MB	TSI
11.3	-1.5	53	96	15	10.4	42		16	0.72	0.010	0.05	240

If you're looking for one to show this spring, here she is. She has the look, style and balance needed to be highly competitive. The Copy White calves are impressive and this one sorts herself to the top. She will make a cow after her show career.

offered by ECP Cattle



Lot 54

55

## 3 EMBRYOS

M6 NEW GERMAINE 5149 P X JMAR JEFFERSON 8M11

• 1 pregnancy guaranteed

offered by Rolling Hills Charolais



M6 NEW GERMAINE 5149 P • Dam of Lot 55 & 56

56

## 3 EMBRYOS

M6 NEW GERMAINE 5149 P X FH GUN SHOW 0075 P

• 1 pregnancy guaranteed

This great cow was identified at a young age before her sisters dominated the M6 Dispersal. Take your pick of these matings because they will be numbered up, have a look and known genetics.

offered by Rolling Hills Charolais



CCR STEALTH 0554 • Dam of Lot 57

57

## 3 IVF EMBRYOS

CCR STEALTH 0554 X DTR BRIGHTSIDE 1107G2

• 1 pregnancy guaranteed

This mating could be the money maker. Brightside has already produced a National Champion and his daughters are winning all over the state of Texas. The dam of this mating is a great Gun daughter that traces to the Sweetheart family.

offered by Gen 2 Charolais

58

## 1 STRAW SEXED HEIFER

TCCS SAINT CHRISTOPHER

offered by TC Cattle Services



TCCS SAINT CHRISTOPHER

59

## 1 STRAW SEXED HEIFER

TCCS SAINT CHRISTOPHER

offered by TC Cattle Services

60

## 5 STRAWS CONVENTIONAL

TCCS SAINT CHRISTOPHER

One look at the former Denver Champion's daughters and you'll know why the Greta influence is a difference maker. Semen supplies are limited and this could be one of your final opportunities to purchase semen on this great champion.

offered by TC Cattle Services





2005 RUHL DRIVE  
GUTHRIE, OK 73044

# The Renaissance XXXXII

## 2024 CONTRIBUTORS

**A& L DAVIS CHAROLAIS**..... Lots 12, 16, 17  
Allen Davis, DeSoto, MO, 639-208-4509

**ARISTO FARM**..... Lots 4, 5, 6, 7 51, 52, 53  
Tom Greco, Topeka, KS, 785-554-7258

**BERTSCHE FARMS**..... Lot 31  
Troy & Katie Bertsche, Flanagan, IL, 815-674-1244

**BYERGO BEEF GENETICS**..... Lots 38 & 39  
Joe Byergo, Dearborn, MO, 816-390-2426

**CHATEAU CATTLE CO**..... Lot 22  
Jim Husz, Maryville, MO, 660-582-6329

**CIRCLE M CHAROLAIS**..... Lots 28 & 48  
Jerry & Barry Maupin, Newbern, TN, 731-694-6329

**CORMAN CHAROLAIS**..... Lots 14 & 15  
Dan & Connie Corman, Pomona, MO, 417-252-1373

**ECP CATTLE**..... Lots 11, 33, 54  
Ethan Propp, Adair, OK, 918-864-6567

**FOX HOLLOW FARMS**..... Lots 40, 41, 42, 46, 49, 50  
Stephen & Michal Mellott, Hulbert, OK, 918-409-6068;  
Randy White 205-706-5955

**GEN 2 CHAROLAIS**..... Lot 57  
Brush Mitchell, Mtn. Grove, MO, 815-238-4083

**HALE FARMS**..... Lots 20, 21, 27, 29, 34, 35, 36  
Rick Hale, Louisburg, MO, 417-838-7251

**LAFRAISE FARMS**..... Lots 32, 43, 44, 45, 47  
Steve Bertsche, Flanagan, IL, 815-674-2395

**LIGHTFOOT CHAROLAIS**..... Lots 13 & 30  
Randy Lightfoot, Polk, MO, 417-328-8846

**NORTHWEST MISSOURI STATE UNIVERSITY**.. Lots 23, 24, 25, 37  
Jim Husz, Maryville, MO, 660-582-9151

**ROLLING HILLS CHAROLAIS**..... Lots 10, 26, 55, 56  
Ross Embry, Leitchfield, KY, 270-899-0638

**SKEANS CATTLE CO**..... Lot 2  
David Skeans, Gainesville, TX, 940-736-7500

**SUPER PUNCHER OWNERS**..... Lot 1  
David Skeans, Gainesville, TX, 640-736-7500

**TC CATTLE SERVICES**..... Lots 58, 59, 60  
Doug Thurnau, Ramsey, IL, 618-904-4714

**WALKER FARM**..... Lot 3  
Wesley Walker, Dayton, TX, 936-402-3891

**WINDY HILL CHAROLAIS**..... 8, 9, 18, 19  
David & Annette Bonacker, Cedar Hill, MO, 314-974-5230