

**CHAROLAIS
IN THE ROCKIES**

Denver, traditionally the livestock show to start the new year and your search for new seedstock, new bloodlines and new ideas. Denver holds the mystical spirit of the exciting endeavor of finding the genetics that will bring out a standard of excellence in your herd. Denver, long noted as the livestock event of the year, it's the place for the nation's top breeders to gather and debut their masterpieces...

Sunday, January 16, 2011 • 2:30 p.m. (MST)
Beef Palace Auction Arena
National Western Stock Show, Denver, Colorado

■ **Schedule of Events:**

Saturday, Jan. 15 – Charolais Pen Shows, 11 a.m.
Sunday, Jan. 16 – Charolais in the Rockies Sale, 2:30 p.m.
Monday, Jan. 17 – ROE Charolais Show, 8 a.m.

■ **Charolais Journal Representatives:**

Kristian Rennert: (308) 440-9463 (cell)
David Hobbs: (913) 515-1215 (cell)

■ **Motel Headquarters:**

Renaissance Denver Hotel
3801 Quebec St. (I-70 exit 278)
303-399-7500 • (888) 238-6762

■ **Sale Sponsor:**

Rocky Mountain Charolais Association

■ **Sale Manager:**



Greg Hubert
P.O. Box 100
Oakley, KS 67748
(785) 672-3195
(785) 672-7449 (cell)
greghubert@st-tel.net

■ **Auctioneer**

Dennis Metzger (816) 519-8208 (cell)

Additional lots may be added to this sale offering from the Pen Shows and from the show cattle "On the Hill".

1 TR PZC RAPID FIRE 9775 ET

04/13/2009 EM776309 POLLED



Presented by: Thomas Ranch, Harrold, S.D.; Polzin Cattle, Darwin, Minn.; Bar S Ranch, Paradise, Kan. & Wright Charolais, Richmond, Mo.

■ Semen Packages

TR MR FIRE WATER 5792RET M704588	THOMAS OAHE WIND 0772ET P	LT WYOMING WIND 4020 PLD	THOMAS MS CAMELOT 5646
	THOMASSWISSERSWEET1764ET	LHD CIGAR E46	THOMAS MS BONANZA 8698
	JWK IMPRESSIVE D040 ET	WCR SIR FA MAC 2244	HBR LADY LIZ 721 P
THOMAS MS IMPRESSIVE0641 F873178	BCI MISSVERYLIMIT 6033P	SKYMONT P UNLIMITED 0115	BCR ROSE GIRL 0093
EPDs: 3.4 0.7 32 58		-2 3.0 14 1.1	

- What better way to start the 2011 sale season off than with an offering of the current National Reserve Grand Champion Bull – Rapid Fire!
- THIS WILL BE THE ONLY SEMEN SOLD IN 2011!
- Not only was Rapid Fire the most talked about bull in the barn during the National Show, but so were his full sisters that were the National Champion and Reserve Champion Females!
- The National Champion Female TR PZC Firegirl 9745W ET lit up the National Sale ring when she sold for \$50,000 to Nathan Suttles in Illinois and had four bidders on her over \$35,000! Then another full sister to Rapid Fire, PZC TR Bomshell 941 comes into the ring next and a flush sells for \$8,500 to the Kenneth Voboril Family in Kansas!
- There is not a more popular genetic power family in the entire Charolais breed today!
- Selling will be five (5) semen packages. Each package will consist of 40 units of semen and 40 signings. A package may be split between two breeders, so find a partner if you only want 10 or 20 units. Additional signings will be available for ET progeny at \$25.00 each. Each winning bidder has the option to take more than one package.

2 TR PZC MS UNLIMITED 0791 ET

03/04/2010 EF1124016 POLLED



TR PZC Firegirl 9745W ET



PZC TR Bomshell 941P

Presented by: Thomas Ranch, Harrold, SD & Polzin Cattle, Darwin, Minn.

■ Show Heifer Prospect

TR MR FIRE WATER 5792RET M704588	THOMAS OAHE WIND 0772ET P	LT WYOMING WIND 4020 PLD	THOMAS MS CAMELOT 5646
	THOMASSWISSERSWEET1764ET	LHD CIGAR E46	THOMAS MS BONANZA 8698
	JWK IMPRESSIVE D040 ET	WCR SIR FA MAC 2244	HBR LADY LIZ 721 P
THOMAS MS IMPRESSIVE0641 F873178	BCI MISSVERYLIMIT 6033P	SKYMONT P UNLIMITED 0115	BCR ROSE GIRL 0093
EPDs: 3.4 0.7 32 58		-2 3.0 14 1.1	

- That's right, a full sister to the 2010 National and Reserve National Champion Females Firegirl and Bomshell and a full sib to the Reserve National Champion Bull Rapid Fire!
- Many visitors to Thomas Ranch say this could be the young one with the most potential of all! She is extremely thick and loaded up with hair.
- The list of her full sisters that have sold for a high dollar goes on and on; Firegirl \$50,000, Bomshell \$14,000, Brooke \$10,500, 19 & Crazy \$17,500, Fight Like A Girl \$16,000, Ms Fire 9744 \$18,500 and White Liar \$15,000!
- You only have to wait for the success to continue.

3 EMBRYOS



Presented by: Polzin Cattle, Chris Polzin, Darwin, Minn.

■ Selling Eight Frozen Embryos

3a Four (4) Frozen Embryos

TR MR FIRE WATER 5792RET M704588	THOMAS OAHE WIND 0772ET P	THOMASSWISSERSWEET1764ET
	LHD CIGAR E46	ACE MS BUD 2419 ET F969404
	RC MS BUD 418 POLLED	
Est. EPDs: -1.5 1.6 25 38 3	0.5 16 1.0	

3b Four (4) Frozen Embryos

TR MR FIRE WATER 5792RET TR PZC RAPID FIRE 9775 ET EM776309	THOMAS MS IMPRESSIVE0641
	LHD CIGAR E46
ACE MS BUD 2419 ET F969404	RC MS BUD 418 POLLED
Est. EPDs: 1.0 1.3 25 43 2 1.9 16 0.8	

- These lot 3A embryos are full sibs to ACE-JJS Kirbe Firebud 1 (pictured) the highly successful show heifer for Calvin Dix, Bar D Ranch, Stockton, Kansas. She was a many time Grand Champion Female including Supreme Championships.
- The Lot 3B embryos are sired by the current Reserve National Championship Bull Rapid Fire (Lot 1) and out of that same superior Cigar daughter out of the only full sister to Budsmydad in the world.

4 CHOICE OF PEN BULLS



Swegle Creek Ko Jo 514 ET

Presented by:
Bar S Ranch,
Paradise, Kan.



Thomas Ms Impressive 0641

Choice of Bar S Pen Bulls

	DOB	BW	WW	AICA#
4a - Bar S Kojo 0463 Polled	3-9-10	86	705	EM790908
4b - Bar S Kojo 0466 Polled	3-10-10	82	664	EM790909
4c - Bar S Kojo 0469 Polled	3-11-10	86	679	EM790910

LT ASSERTION I277 P SWEGLA CREEK KO JO 514 ET M701936	EATONS ASSERT 9171 LT ALLI'S CLASS 9140 P
BIG CREEK ANGEL P 131	LT WYOMING WIND 4020 PLD BIG CREEK ANGEL P
JWK IMPRESSIVE D040 ET THOMAS MS IMPRESSIVE0641 F873178	WCR SIR FA MAC 2244 HBR LADY LIZ 721 P
BCI MISSVERYLIMIT 6033P	SKYMONT P UNLIMITED 0115 BCR ROSE GIRL 0093
EPDs: 9.6 -1.4 35 60 -5	7.1 12 0.8

- Bar S Ranch has brought you one of the more interesting pedigrees in the breed today with this special offering.
- These three bull calves are out of the famous Thomas Ms Impressive 0641, the dam of the current National Champion Female TR PZC Firegirl, the Reserve National Champion Female PZC TR Bomshell and the Reserve National Champion Bull TR PZC Rapid Fire. See lots 1 and 2!
- Their sire Swegle Creek Ko Jo is sired by LT Assertion who sired an AICA Show Bull and Female of the Year and Ko Jo's dam is the National Champion Female Big Creek Angel P 131.
- Bar S Ranch had the 2010 Denver Grand Champion Pen of Heifers and are following up with this outstanding Pen of Bulls.

5 BAR S VERNA 9979

10/10/2009 EFI123827 POLLED



Presented by: Bar S Ranch Paradise, Kan.



Show Heifer Prospect

PF IMPRESSED 620 P ET WC-WCCC ROCKETFUEL 7109 M735869	JWK IMPRESSIVE D040 ET MISS KC CROCUS 904 POLL
SCC MISS 3027 ET	SPARROWS ALLIANCE 513G WCR MISS L06 5078 ET P
LT WYOMING WIND 4020 PLD THREE TREESVERNA 2854 ET F974464	SCHURRTOP 5627 LT CHAP'S LADY 2170P
JWK VERNA E225 ET	VCR SIR DUKE 914 PLD LEMMON ACTRESS X140
EPDs: 7.2 1.4 36 58	2 6.1 19

- This fall show heifer will grab the hearts of many breeders that go through the Bar S show string.
- Her sire is the \$25,000 ½ interest Rocket Fuel senior herd sire for Wright Charolais in Missouri and Southern Cattle Co. in Florida and his sire is the former National Champion Bull PF Impressed and his dam is the \$12,000 #3027 who was out of the \$24,000 #5078!
- The dam of this heifer is one of Three Trees greatest donor families, Three Trees Verna 2854 (pictured). Verna is one of Wyoming Wind's most beautiful daughters and there are a lot. Her dam E225 will go down in Charolais history as one of Duke 914's very best daughters and that is equally saying a great deal.

6 EMBRYOS



ACE Ms Dutchess 0133 ET

Presented by: Bar S Ranch, Paradise, Kan.

Selling Four Frozen Embryos

LT WYOMING WIND 4020 PLD LC SUSPECT 0109 P ET M611748	SCHURRTOP 5627 LT CHAP'S LADY 2170P
LC MISS LACI CAE 104	TAC MR COOL 202 P/S ET TJF COLOGNE 473
VCR SIR DUKE 914 PLD ACE MS DUTCHESS 0133 ET F950016	WCR SIR DUKE 761 WCR MISS MAC IV 534
ACEWINDY OF DUKE/261	LT WYOMING WIND 4020 PLD WCR MISS DUKE 7717
Est. EPD's: 6.1 0.1 27 40 5 4.8 19 0.6	

- This mating has produced some attractive show heifers for us and well it should. The sire has long been noted for producing show champions and the dam is bred to make'em great.
- Their dam #0133 (pictured) is a beautiful beast that puts the pedigree power of Duke 914, Wyoming Wind and Miss Duke 7717 together.

7 OCR MISS PEUGEOT R04

01/05/2005 F1021422 POLLED



Presented by:
M.A.C. Cattle,
Mac & Connie Smith,
Horse Cave, Ky.

■ Selling a Guaranteed Successful Flush

2UP PEUGEOT ET KEYS PEUGEOT 72N M671341	MISS KEY SALLY 73H PLD	2UP LIMITED EDITION L147 PALGROVE ESTELLA I4PKJ124E
OCR MR PERFORMER J13 PLD OCR MISS PERFORMER N60 F1021421	OCR MISS ELIMINATOR G06	ASC ELIMINATOR 032 LTC MS SALLY 618 POLLED VCR MR PERFORMER 6103 ET OCR MISS ELIMINATOR G18
EPDs: 5.3	-0.6	24 41
	10	3.4 22

- It feels good to get our old friend Mac Smith back into and onto the Charolais scene.
- We are offering a successful flush in his principal Charolais donor OCR Miss Peugeot R04 or "Char" as she is commonly referred to in the club calf business.
- You will remember her from her famous bred heifer picture that captured the attention of many in the Charolais and club calf world.
- R04 was bred by Odden Charolais in South Dakota and was the lead heifer in their 2006 Denver Pen of Three Heifers and then the Grand Champion Female at the Kentucky State Fair.
- She went on to be the 2006 Grand Champion Female at the North American Junior Show and then a flush in her sold for \$8,250 in the Frozen Gold Sale in Denver in 2007 and then selling for \$13,500 a year later.
- R04 is a daughter of the N60 in which a flush also sells in this sale as Lot 9.
- A minimum of seven (7) transferable embryos is guaranteed. This donor has averaged 13.5 embryos per flush over three flushes.

8 CHC TEXAS PLAYBOY 6065

10/23/2009 MP68 POLLED



Yellow Jacket

Presented by: Cedar Hill Cattle,
Richard Wahrmond
Center Point, Texas

■ 3/4 Charolais Herd Sire Prospect

LIFELINE
YELLOW JACKET
PUREBRED HOODOO DAM

OCR MR PERFORMER J13 PLD OCR MISS PERFORMER N60 F1021421	OCR MISS ELIMINATOR G06	VCR MR PERFORMER 6103 ET OCR MISS ELIMINATOR G18
		OCR ELIMINATOR E28 OCR MISS MONGO E53

BW: 63 lbs ADJ.WW: 819 lbs ADJ.YW: 1470 lbs

- CHC Texas Playboy 6065 will be one of the most interesting percentage Charolais bulls to sell to the public in quite some time.
- He will not be in Denver, but a video of him, his dam N60 (Lot 9) and Mac Smith's maternal sister R04 (Lot 7) will be playing next to the Charolais tent in the "yards." Be sure to stop in a take a look and enjoy some Charolais hospitality.
- His sire Yellow Jacket is a half blood Charolais bull sired by Lifeline (Maine) and out of a Kris Black Hoodoo Charolais cow. Yellow Jacket and Lifeline are two of the club calf industries top sires.
- This herd sire prospect can truly "run with the big boys."
- Selling will be 1/2 interest and full possession. Delivery will be from Center Point, TX.
- The Wahrmonds wish to promote and sell semen jointly with the new owner.

9 OCR MISS PERFORMER N60

02/17/2003 F1021421 POLLED



VCR MR PERFORMER 6103 ET OCR MR PERFORMER J13 PLD M625238	OCR MISS ELIMINATOR G18	HBR PERFORMANCE 932 P WCR MISS MAC IV 534
OCR ELIMINATOR E28 OCR MISS ELIMINATOR G06 F861880	OCR MISS MONGO E53	OCR ELIMINATOR E28 OCR MISS COCHISE E49 ASC ELIMINATOR 032 OCR MISS PERFECTION A05
		KEYS POLLED MONGO 106C OCR MISS MAC B58

EPDs: 0.0 0.4 18 33 14 -1.2 23 0.2

■ Selling a Guaranteed Successful Flush

- Yes, selling a flush in the dam of the Lot 7 flush and the dam of the Lot 8 herd sire prospect.
- This is the female that started it all. A previous flush sold for \$7,500 to Jared Jackson Show Cattle.
- This flush sells with a guarantee of six (6) frozen embryos. She has been averaging nine embryos per flush. All flush work will be conducted at BovaGen, Dr. Boyd Bien, Seguin, Texas. N60 will be available to flush immediately.
- There is opportunity surrounding this entire top of the line cow family.

Presented by: Cedar Hill Cattle, Richard Wahrmond Center Point, Texas

10 LT BALLERINA 7143 P

03/10/2007 F1069089 POLLED



LT Blue Ballerina 9405 Pld



LT Royal Ballerina

Presented by:
Lindskov-Thiel Ranch &
Abbey Thiel, Isabel, S.D.

■ Selling a Guaranteed Successful flush

LT UNLIMITED EASE 9108	BCR POLLED UNLIMITED 003
LT EASY BLEND 5125 PLD	PP MISS SHANDY 214 R194
M705113	WCR PRIME CUT 764 PLD
LT BRENDA 1014 PLD	LT BRENDA'S BREEZE 9207P
LT WYOMING WIND 4020 PLD	SCHURRTOP 5627
LT BALLERINA 3099 PLD	LT CHAP'S LADY 2170P
F979369	SCV JOE MONTANA
LT BALLERINA 0013 PLD	LT BALLERINA 8147 PLD
EPDs: 2.0 1.1 36 63	11 -0.6 29 1.0

- Here is an opportunity to flush the dam of one of the most exciting show heifers to ever come out of the Lindskov-Thiel breeding program.
- This donor is the dam of LT Blue Ballerina 9405 Pld who first gained national attention at the AIJCA Junior Nationals in Sioux Falls this past summer for junior member Abbey Thiel. Blue Ballerina was a reserve division champion defeating in division both of the heifers soon to be the National Champions in Kansas City. Blue Ballerina was also the National Reserve Intermediate Champion Female in Kansas City.
- This donor's second calf, LT Royal Ballerina (pictured) has been a favorite of the 2010 L-T calf crop and is headed to the show ring in 2011 for Abbey.
- Backed by an excellent cow family, Ballerina 7143 is on a roll and is setting the stage to become one of Lindskov-Thiel matriarchs in her own right. Her dam is an AICA Dam of Distinction having weaned five calves with an average ratio of 112. Her maternal grandma has been flushed with embryos exported to Rob & Kylie Costello in Australia.
- Selling one successful flush defined as four confirmed pregnancies or seven frozen embryos. The flush will be done at Trans Ova Genetics at Onida, SD.

10a Four (4) Frozen Embryos LT Bluegrass 4017 x LT Ballerina 7143

- Full sibs to LT Blue Ballerina 9405 Pld.
- LT Blue Ballerina is now owned by Hale Farms and Wild Indian Acres in Missouri and most likely will be in Denver ready for the next battle.

11 EMBRYOS



CJC Illusion N111



LT Unlimited Duke 1172 P



Hales Mrs Cigar 622 ET

■ Selling Eight Frozen Embryos

11a Four (4) Frozen Embryos

LHD PERFECT ALI G1312 ET
CJC ILLUSION N111
M677005
CJC MS PRODUCTIVE K1645
LHD CIGAR E46
HALES MRS CIGAR 622 ET
F945702
LHD MS SMOOTHDEAL B916
Est. EPDs: 0.2 2.9 23 32 10 5.4 22 0.8

11b Four (4) Frozen Embryos

4-L UNLIMITED YL06 PLD
LT UNLIMITED DUKE 1172 P
M677005
LT PRAIRIE MAIDEN 8050
LHD CIGAR E46
HALES MRS CIGAR 622 ET
F945702
LHD MS SMOOTHDEAL B916
Est. EPDs: -1.7 2.9 27 40 18 0.9 31 0.8

- The sire of Lot 11A is Illusion, who sired the highest selling bull for DeBruyckers at \$32,000 in 2009 which was BHD Reality T3136 P.
- The sire of Lot 11B is Duke 1172 one of the greatest breeding sons of the famous YL06.
- The dam of these embryos is one of Rick's best donor dams #622 (pictured). Her dam #B916 is well documented as raising the first and only 1,000 lbs. weaning weight bull for DeBruyckers.

12 EMBRYOS



■ Selling Four Frozen Embryos

CJC ILLUSION N111
BHD REALITY T3136 P
M762026
MD MS SILVERBOE J576
BR DUKE 261
HALES MS DUKE 2067 ET
EF1104404
SCR MISS BARNEY 1082
Est. EPDs: -1.9 2.7 24 37 10 0 22 0.5

- These embryos are sired by the \$32,000 Reality, who's sire is Illusion represented in Lot 11A.
- The dam of these embryos has been one of Rick's top producers as well as a daughter of SCR Miss Barney 1082, "the best cow Hubert ever sent me."

Presented by: Hale Farms, Rick Hale, Louisburg, Mo.

13

JASR POLAR EXPRESS 15V PLD

03/04/2009 M770754 POLLED



*Presented by:
J & S Ranch &
Caitlin Jedlicka,
Koshkonong, Mo.*

■ Herd Sire Prospect

LT ASSERTION 1277 P
LVB GREAT NORTHERN 7054 PLD
M748283

LVB MISS ALL THE WAY L055

TLC INTEGRITY 5087P ET

JASR FERGIE 47 T PLD
F1061910

ACEMSMEGAN ELK09910-70R

EPDs: 3.1 0.7 24 44

EATONS ASSERT 9171
LT ALLI'S CLASS 9140 P

LVB ALL THE WAY L582
LVB MISS MONTANA L382

RC BUDSMYDAD 225 POLLED
RACMISSEXPEDITER6024FFLD

ACE-RC ELKO 5224-0860PET
SSC MS IMPRESSIVE EASE

1 4.1 13

- Selling 1/2 interest and full possession.
- This championship bull is bred to win in the ring and in the pasture.
- Not shown that often, he put it on the big dogs at this summers 2010 Missouri State Fair and came away with the Grand Champion Bull honors.
- His sire was the high selling bull in the Bina Annual Bull Sale in 2008.
- His dam was the powerful calf at side of her dam when they were selected the 2007 AIJCA Junior National Grand Champion Female.
- Don't go home with an empty trailer if you need a solid working herd sire.

■ Show Heifer Prospect

14 JASR SELENA 8X PLD

03/04/2010 F1118436 POLLED

LT ASSERTION 1277 P
LT BLUEGRASS 4017 P
M686569

LT PEARL'S BREEZE 2236 P

BALDRIDGE FASTTRACK 82F
COX MISS FASTRACK 1429
F1094756

COX TOOTSIE 689 ET

EPDs: 9.4 -1.8 22 39

EATONS ASSERT 9171
LT ALLI'S CLASS 9140 P

LT WYOMING WIND 4020 PLD
LT UNLIMITED PEARL 7053P

LT UNLIMITED EASE 9108
BALDRIDGE SWEETHEART 53D

KEYS POLLED PILOT 169F
HVR SARA B 6140

6 5.8 17 0.4

- A fancy, moderate show heifer with lots of future in her.
- In her first outing at the National Junior Show during the Kansas City American Royal she placed second in the first class out of six head.
- These Bluegrass heifers are very moderate in their design, with lots of muscle and pattern.
- Her dam was selected out of the Cox herd in Kentucky and is making some kind of a brood cow.
- Gentle as a kitten and ready for any junior to have success with at the shows this spring and summer and then off to the pasture to make a productive mama cow.

15 EMBRYOS



Gerrard Montezuma 6T



RLL Goin' Places 1329PET

*Presented by:
Wild Indian Acres, House
Springs, Mo. & Rick Hale,
Louisburg, Mo.*

■ Selling Four Frozen Embryos

SVY FREEDOM PLD 307N
GERRARD MONTEZUMA 6T
M782900

GERRARD ROXANNE 18P

Four (4) Frozen Embryos

WCR SIR FA MAC 2244
RLL GOIN' PLACES 1329PET
F950190

VCR MISSPERFECTION0119PD

Est. EPDs: 0.5 0.3 22 49 8 1.7 19 0.2

- This will be some of the most exciting embryos to sell this year.
- The sire is the 2010 Denver National Champion Bull Montezuma and the dam is the most exciting daughter of Mac 2244 ever Goin' Places.
- Goin' Places was the 2005 National Reserve Grand Champion Female and later topped the 2006 National Sale at \$14,000.

16 EMBRYOS



TR Mr Firewater 5792RET



EC Lady Duke 2022

■ Selling Four Frozen Embryos

THOMAS OAHWIND 0772ET P
TR MR FIRE WATER 5792RET
M704588

THOMASWISSERSWEET1764ET

Four (4) Frozen Embryos

VCR SIR DUKE 914 PLD
EC LADY DUKE 2022 P
F956614

JES MS ADVANTAGE C74

Est. EPDs: 2.4 1.5 28 49 6 3.0 20 1.2

- You can only imagine what this mating will produce!
- The sire is the 2006 National Champion Bull Fire Water who sired three of the four current National Champions.
- The dam of these embryos is the dam of the popular EC No Doubt 2022 and one of Duke 914's greatest daughters.

17 CHOICE OF THE EATON BRED HERD SIRES



Eatons Royal Dynasty 6164

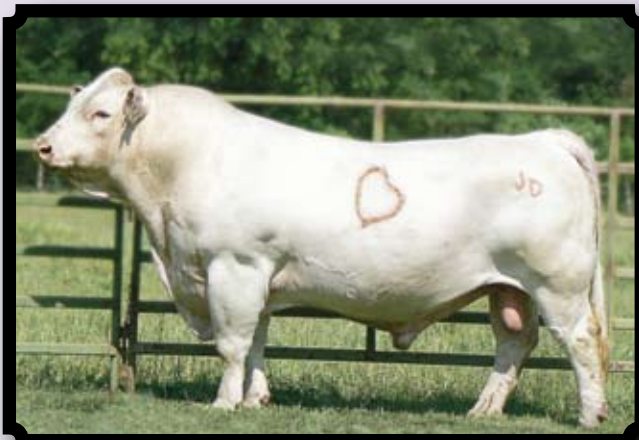


■ Herd Sire Choice

- Only once a year does the Eaton family make this opportunity come available and we are fortunate to have this exciting lot in the Denver sale.
- Selling will be ½ interest and full possession in the buyers choice of any fully owned Eaton Charolais bred proven herd sires, two year old herd sire prospects or any 2010 born young potential herd sire prospects.
- That's right, you get your choice from any of those groups. Eaton herd sires that have proven their value as breeding bulls in the pasture; from the 50 some two-year-old bulls that they thought enough of to use themselves last year or plow into the 500 or so young yearling bulls that they have raised.
- With over 100 years of family ranching and 36 years of collecting carcass data there is added value in choosing a herd sire from among these closed herd genetics.
- Come to Montana with your working boots and lots of time to sort through these bulls and their dams.

*Presented by: Eaton Charolais,
The Eaton Family,
Lindsay, Mont.*

18 CHOICE OF TWO ET SISTERS



HooDoo Slasher 1144

*Presented by: Wagner Livestock, Jeff & Nicole Wagner,
Linden, Calif.*

■ Choice of Denver Heifer Pen

18a WL Ms Montanas Slasher 1020 2-18-10 EF1122079

18b WL Lil'Ms Slasher 1030 2-18-10 EF1122080

HOODOO CROOK 7118	HOODOO 5076
HOODOO SLASHER 1144	MISS HOODOO ZT036
M625629	
MISS HOODOO Z6151	HOODOO 3013
	MS ASTRO Z 5211
RC MONTANA 644 POLLED	HTA WHITEHOT 105A
RC MS MONTANA 2161 TW	RC MS BUDSMYDAD458POLLED
F952099	
RC MS DUKE 5135	BOW DUKESON 980Y POLL
	MS RC CHINOOK 196 POLLED
EPDs: -7.0 2.3 21 42 3 -4.9 13 0.4	

- Wagner Livestock is bringing their first Pen of Heifers to Denver and will offer the buyer the choice of these two outstanding ET sisters.
- They are sired by the famous Hoodoo Slasher 1144 that has produced countless show winners and sale toppers for Dismukes Ranch.
- The dam of these two ET's is a Rambur bred female that has been over the top in her production.
- Her first three natural bull calves had an average adjusted weaning weight ratio of 707 lbs. and average yearling weight of 1,400 lbs.
- Her first bull calf was DR RB Slayer 405 who was exciting enough for these four breeders to own him in partnership; Dismukes Ranch, Cory Reid, Sidney Wing and Woodcock Livestock.
- Watch these heifers in the pen show on Saturday morning and then choose your favorite heifer on Sunday afternoon.

19 EMBRYOS



SCC Miss Mary 2500 ET

Presented by: Wright Charolais, Derry Wright, Richmond, Mo.

■ Selling Six Frozen Embryos

19a Three (3) Frozen Embryos

Est. EPDs: 2.8 2.0 25 35 -6 4.9 7 0.9

HFCC PLD EVOLUTION 5L
SVY FREEDOM PLD 307N
M756920

SVY PURRFECT 184L

LT WYOMING WIND 4020 PLD
SCC MISS MARY 2500 ET
F959961

SCC MISS MARY G009 P ET

- The Freedom genetics are as hot as one would want and here is an opportunity to own some embryos not only sired by him, but out of a great producer.
- Freedom sired the current AIJCA Junior National Grand Champion Female and several more champions both in Canada and in the U.S.
- Two full sisters to these embryos sold for an average of \$5,125 in the 2010 Northern Exposure Sale to purebred breeders Dybdal Charolais and Wild Indian Acres.

PF IMPRESSED 620 PET
WC-WCCC ROCKETFUEL 7109
M735869

SCC MISS 3027 ET

19b Three (3) Frozen Embryos

Est. EPDs: 6.0 1.2 34 52 -6 5.6 12 1.1

LT WYOMING WIND 4020 PLD
SCC MISS MARY 2500 ET
F959961

SCC MISS MARY G009 P ET

- The feminine donor of these embryos is a beautiful patterned female who's dam is SCC Miss Mary G009, the dam of the National Champion Bull WDWZ Polled Profit.
- Her sire is the \$25,000 ½ interest Rocket Fuel senior herd sire for Wright Charolais in Missouri and Southern Cattle Co. in Florida and his sire is the former National Champion Bull PF Impressed and his dam is the \$12,000 #3027 who was out of the \$24,000 #5078!

20 CHOICE OF THE ENTIRE HERD



Presented by: Hebbert Charolais Ranch, Dave & Micki Hebbert, Hyannis, Neb.

■ Selling Bred Cow, Bred Heifer and Open Heifer Selections

- Our good friends Dave & Micki Hebbert only offer this unique lot once a year during the National Western Stock Show and we should all be glad they do.
- This is an outstanding opportunity to select one female from each of their distinct groups of females.
- Dennis Metzger told me one time, "that the only thing wrong with Dave Hebbert is that he was born 100 years to late." These cattle are raised like any good cowboy would do, they are not pampered, they are fault free, sound and range ready. You will be pleased with your selection.

Lot 21A - Choice from over 300 mature spring calving cow/calf pairs. These cows are daughters of LT Unlimited Ease 9108, Skymont P Unlimited 0115, RC Montana 644 and Baldrige Cadillac 74E. They will have calves A.I. sired by LT Leader Board 6110, LT Easy Blend 5125, RC Montana 644 and LT Cheyenne Blend 7142.

Lot 21B - Choice from over 100 spring calving first-calf-heifer pairs. These females are daughters of M6 Grid Maker 104, LT Easy Blend 5125, RC Montana 644 and LT Leader Board 6110. They will have A.I. sired calves by: LT Long Distance and LT Silver Distance 5342.

Lot 21C - Choice from over 125 spring 2010 heifer calves. These Heifers are daughters of LT Leader Board 6110, LT Silver Distance 5342, M6 Grid Maker 104, RC Montana 644 and LT Easy Blend.

The Hebberts would like these selections to be made before or near their annual bull sale the first week of April. This will present the buyer the opportunity to see many of these females with calves at side. They will also retain a ¼ semen interest in any bull calf selected at the side of his dam.

21 LT WYOMING WIND 4020 PLD

02/27/1994 M411450 POLLED



Presented by: Reinhart Charolais, Nathan Reinhart, Paragould, Ark.

■ Selling 10 units of Semen

WCR SIR DUKE 783	BR DUKE 261						
SCHURRTOP 5627	WCR MISS MAC 4432						
M300802	EXCALIBUR 356 BVF						
MISS SUGAR VALLEY 908	MISS ORO ALGER 08						
LT UNLIMITED CHAPS 0109	BCR POLLED UNLIMITED 003						
LT CHAP'S LADY 2170P	MS SERENDIPITY EX 15						
F634394	WCR SIR DUKE 611						
LT PRAIRIE MAIDEN 8095	BR LADY MAC R093						
EPDs: 4.9	1.1	25	41	0	8.4	13	1.4

- Wyoming Wind is the most popular A.I. sire of the Charolais breed.
- His semen continues to diminish, but also continues to be highly sought after.
- This semen will sell so much per unit with the winning bidder having the option to take all ten units until all are sold.

22 ORIGINAL ART

- The AIJCA Junior board, along with accomplished artist Mandy Raitel, is offering you the chance to own an exclusive original drawing. Mandy graduated with a BFA from the University of Missouri-Columbia and has taught K-12 art classes. Mandy's many accomplishments include being featured artist in Lot One magazine. She has done a variety of work for numerous junior associations including Angus, Hereford, Shorthorn, and Santa Gertrudis. These drawings have drawn the attention of cattlemen across the country.
- The proceeds of this drawing, will benefit the AIJCA Junior Board. The junior board works hard throughout the year to prepare for the Junior National each summer and would greatly appreciate your support. Don't miss your chance to own this one of a kind original drawing by Mandy Raitel, and support the Junior Board while doing so.
- Check www.cattleart.com for an hour by hour progression of the drawing until it is complete. The drawing will be on display before the sale.

Artist Statement

There has never been anything else, besides my family, that has meant more to me than the show cattle business. You could say I have a passion for it. Throughout my career as a show cattle enthusiast, I have slammed the gate, waved the blue ribbon gloriously at the front, and also have been crowded and sandwiched in the middle. I have been beat by politics, and also smothered with banners bearing no political flavor. But, that doesn't matter. I love it all. I love the late nights with a show road family, some of which are closer than blood relatives. I love the early mornings in Denver when I can see my breath where my heart beats in anticipation of the show day ahead. Showing makes me who I am. I produce work that shows the incredible range of emotion that resonates from cattle people like me who have a passion for the cattle industry. Passion begets great art, and my passion lies in the heart of the simple bovine.

■ AIJCA Donation Lot



Amanda Raitel.
Is He Lookin'?
2003.
Collection of the artist,
Falls City, NE.



Presented and Donated by: Amanda Raitel, Falls City, Neb. • www.cattleart.com