

ROLL OF EXCELLENCE

AICA Roll of Excellence show results Fort Worth Stock Show and Rodeo

Fort Worth Stock Show and Rodeo— National ROE

Fort Worth, Texas. ■ Jan. 30, 2010

Judge: Chad Breeding, Miami, Texas.

Total Shown—55: Females-39; Bulls-16

Females

Grand and Intermediate Champion Female: SCC Blaze of Glory 257U, 5-21-08, by SVY Freedom Pld 307N. Samsel Cattle Company, Cloverdale, Ind.

Reserve Grand and Spring Calf Champion: JM Ms Champagne ET, 3-13-09, by TR Mr Fire Water 5792RET. Myshal Jones, Ardmore, Okla.

Reserve Spring Calf Champion Female: LCR Miss Sammy 100, 5-25-09, by OBG Assertion 4906 P ET. Mason Avery and Shawn Alan Leifeste, Cameron, Texas.

Junior Calf Champion Female: SCC D&D Lacey 289W, 1-16-09, by SVY Freedom Pld 307N. Lauren Greeson, Coatesville, Ind.

Reserve Junior Calf Champion Female: PC Golden Freedom P903, 1-10-09, by SVY Freedom Pld 307N. Haley Dennis, Saint Jo, Texas.

Senior Calf Champion Female: OBG Elvira 8115, 11-1-08, by SVY Freedom Pld 307N. Lauren Greeson.

Reserve Senior Calf Champion Female: HAMM Mogo U50, 9-13-08, by HAMM Taskmaster 13P ET. Mogo Charolais, Florence, Ala.

Junior Champion Female: DCF Pure Gold 802 P 3-23-08, by SR/NC Field Rep 2158 P ET. Haley Dennis.

Reserve Junior Champion Female: HVR Ms Supreme 841, 3-19-08, by SVY Freedom Pld 307N. Abby Fowler, Omaha, Ark.

Senior Champion Female: RGJ Miss Char, 2-3-08, by Hoodoo Slasher 1144. Ryan Jones, Ardmore, Okla.

Reserve Senior Champion Female: LC Ms Gladiator 7122 P, 9-9-07, by BLB Gladiator 303 PET. Trinity Valley Community College, Athens, Texas.

Class Placings

Late Spring Heifer Calves—Calved May 25 to June 12, 2009. *3 shown:* 1. Mason Avery and Shawn Alan Leifeste on LCR Ms Sammy 100. 2. Ridder Farms, Hermann, Mo., on RF Ms Dakota 954 P 3. Lehman Charolais, Tioga, Texas, on LC Ms Suspect 9044 P.

Late Spring Heifer Calves—Calved April 2 to April 11, 2009. *4 shown:* 1. BW Cattle Farm, Marble Falls, Texas, on Ms April 130W15. 2. BW Cattle Farm on Ms April 130W10. 3. Chase Patman, Waxahachie, Texas, on PC Ms OroBlanco P930.

Early Spring Heifer Calves—Calved March 3 to March 16, 2009. *7 shown:* 1. Myshal Jones on JM Ms Champagne ET. 2. Brock Otto, Fayetteville, Texas on BJCF 12R's Miss Marilyn 383 P 3. Ridder Farms on RF Ms EZ On the Eyes 932 P.

Junior Heifer Calves—Calved Feb. 4 to Feb. 23, 2009. *5 shown:* 1. Bracewell Cattle Company, Tioga, Texas on BLB-LC Madrid's Legacy 907 PET. 2. BW Cattle Farm on Ms April 130W4. 3. BW Cattle Farm on Ms April 130W2.

Junior Heifer Calves—Calved Jan. 4 to Jan. 21, 2009. *3 shown:* 1. Lauren Greeson, on SCC D&D Lacey 289W. 2. Haley Dennis on PC Golden Freedom P903. 3. Bar J Charolais, Liverpool, Texas on HAMM Mogo 194W.

Winter Heifer Calves—Calved Nov. 1 to Dec. 24, 2008. *4 shown:* 1. Lauren Greeson on OBG Elvira 8115. 2. Chase Patman on PC Ms Freedom P861 ET. 3. Marti Charolais, Cleburne, Texas on GWM Magnolia 855.

Senior Heifer Calves—Calved Sept. 8 to Sept. 22, 2008. *3 shown:* 1. Mogo Charolais on HAMM Mogo U50. 2. Bar J Charolais on M6 Ms 0383 Germaine 8104 P ET. 3. Marti Charolais on GWM Texas Rose 833 ET.

Summer Yearling Females—Calved May 21, 2008. *1 shown:* 1. Samsel Cattle Company on SCC Blaze of Glory 257U.

Late Spring Yearling Females—Calved April 24, 2008. *1 shown:* 1. Chase Patman on PC Ms Freedom P823 ET.

Early Spring Yearling Females—Calved March 13 to March 23, 2008. *5 shown:* 1. Haley Dennis on DCF Pure Gold 802 P 2. Abby Fowler on HVR Ms Supreme 841. 3. Keaton McConathy, Angleton, Texas, on PC Ms Freedom P826 ET.

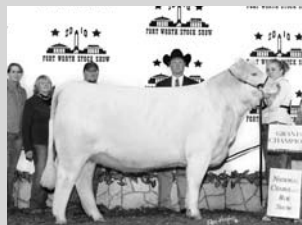
Junior Yearling Females—Calved Feb. 3, 2008. *1 shown:* 1. Ryan Jones on RGJ Miss Char.

Senior Yearling Females—Calved Sept. 9, 2007. *1 shown:* 1. Trinity Valley Community College on LC Ms Gladiator 7122 P.

Bulls

Grand and Senior Calf Champion Bull: SCC Time Bandit 290W, 2-8-09, by SVY Freedom Pld 307N. Samsel Cattle Company, Cloverdale, Ind.; Mid Continent Farms, Washington, Kan.; and Voboril Cattle Co., Overland Park, Kan.

Fort Worth Stock Show and Rodeo



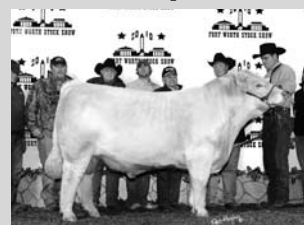
Grand Champion Female



Reserve Champion Female



Grand Champion Bull



Reserve Champion Bull

Reserve Grand and Intermediate Champion Bull: HAMM Mogo U23, 5-1-08, by HAMM Charboneau 2N. Mogo Charolais and Bar J Charolais.

Spring Calf Champion Bull: BJCF Powerplus 391, 5-13-09, by HAMM Bramard 12R. Bar J Charolais.

Reserve Spring Calf Champion Bull: Illusion 130W14, 4-10-09, by CJC Illusion N111. BW Cattle Farm.

Reserve Junior Calf Champion Bull: Hoodoo SC Silver Dust 794 ET, 2-10-09, by Hoodoo 8083. Silver Creek Farm, Lockney, Texas.

Senior Calf Champion Bull: LC Mr Gunner 8131 P ET, 11-17-08, by Link Mr 650 Gunner Wind 317P. Lehman Charolais, Tioga, Texas.

Reserve Senior Calf Champion: GWM Texas Ranger 850 ET, 9-19-08, by GWM Texas Riviera 314. Marti Charolais.

Senior Champion Bull: M6 7M Madrid 701, 2-13-07, by Sparrows Madrid 7M. Bar J Charolais.

Reserve Senior Champion Bull: Mead-RF X-Factor G584 P, 9-27-07, by LT Wyoming Wind 4020 Pld. Ridder Farms and Polzin Cattle, Darwin, Minn.

Class Placings

Late Spring Bull Calves—Calved May 13, 2009. *1 shown:* 1. Bar J Charolais on BJCF Powerplus 391.

Early Spring Bull Calves—Calved April 4 to April 10, 2009. *5 shown:* 1. BW Cattle Farm on Illusion 130W14. 2. BW Cattle Farm on Illusion 130W11. 3. BW Cattle Farm on Illusion 130W9.

Junior Bull Calves—Calved Feb. 8 to Feb. 10, 2009. *2 shown:* 1. Samsel Cattle Company,

Mid Continent Farms and Voboril Cattle Co., on SCC Time Bandit 290W. 2. Silver Creek Farm on Hoodoo SC Silver Dust 794 ET.

Winter Bull Calves—Calved Nov. 1 to Nov. 17, 2008. *4 shown:* 1. Lehman Charolais on LC Mr Gunner 8131 P ET. 2. Bar J Charolais on HAMM Mogo U69. 3. Chase Patman on PC Mr Stonecold P862.

Senior Bull Calves—Calved Sept. 19, 2008. *1 shown:* 1. Marti Charolais on GWM Texas Ranger 850 ET.

Summer Yearling Bulls—Calved May 1, 2008. *1 shown:* 1. Mogo Charolais and Bar J Charolais on HAMM Mogo U23.

Senior Yearling Bulls—Calved Sept. 27, 2007. *1 shown:* 1. Ridder Farms and Polzin Cattle on Mead-RF X-Factor G584 P.

Two-Year Old Bulls—Calved Feb. 13, 2007. *1 shown:* 1. Bar J Charolais on M6 7M Madrid 701.

Groups

Produce of Dam—*2 shown:* 1. Chase Patman on DCF Polled Gold 591. 2. Samsel Cattle Company on Thomas Ms Bonanza 8673.

Junior Get-Of Sire—*3 shown:* 1. Samsel Cattle Company on SVY Freedom Pld 307N. 2. Bar J Charolais on HAMM Bramard 12R. 3. Chase Patman on SVY Freedom Pld 307N.

Get-Of Sire—*3 shown:* 1. Chase Patman, Waxahachie, Texas on SVY Freedom 307N. 2. Cannon Charolais Farm on LT Wyoming Wind 4020 Pld. 3. Samsel Cattle Company on SVY Freedom 307N.

Breeder's Herd—*2 shown:* 1. Chase Patman. 2. Marti Charolais.

Group of Five Head—*2 shown:* 1. Chase Patman. 2. Marti Charolais. **CJ**